

# Anti-Cyclin E1 (pT395) Antibody

Rabbit polyclonal antibody to Cyclin E1 (pT395)

Catalog # AP59981

## Product Information

---

<b>Application</b>	WB, IHC
<b>Primary Accession</b>	<a href="#">P24864</a>
<b>Other Accession</b>	<a href="#">Q61457</a>
<b>Reactivity</b>	Human, Mouse, Rat
<b>Host</b>	Rabbit
<b>Clonality</b>	Polyclonal
<b>Calculated MW</b>	47077

## Additional Information

---

<b>Gene ID</b>	898
<b>Other Names</b>	CCNE; G1/S-specific cyclin-E1
<b>Target/Specificity</b>	Recognizes endogenous levels of Cyclin E1 (pT395) protein.
<b>Dilution</b>	WB~~WB (1/500 - 1/1000), IHC (1/100 - 1/200) IHC~~WB (1/500 - 1/1000), IHC (1/100 - 1/200)
<b>Format</b>	Liquid in 0.42% Potassium phosphate, 0.87% Sodium chloride, pH 7.3, 30% glycerol, and 0.09% (W/V) sodium azide.
<b>Storage</b>	Store at -20 °C.Stable for 12 months from date of receipt

## Protein Information

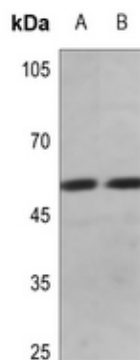
---

<b>Name</b>	CCNE1
<b>Synonyms</b>	CCNE
<b>Function</b>	Essential for the control of the cell cycle at the G1/S (start) transition.
<b>Cellular Location</b>	Nucleus.
<b>Tissue Location</b>	Highly expressed in testis and placenta. Low levels in bronchial epithelial cells.

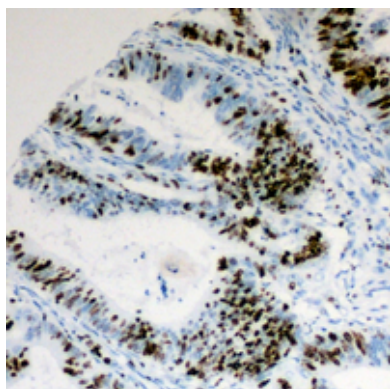
## Background

---

KLH-conjugated synthetic peptide encompassing a sequence within the C-term region of human Cyclin E1 (pT395). The exact sequence is proprietary.



Western blot analysis of Cyclin E1 (pT395) expression in mouse kidney (A), rat kidney (B) whole cell lysates.



Immunohistochemical analysis of Cyclin E1 (pT395) staining in human colon cancer formalin fixed paraffin embedded tissue section. The section was pre-treated using heat mediated antigen retrieval with sodium citrate buffer (pH 6.0). The section was then incubated with the antibody at room temperature and detected using an HRP conjugated compact polymer system. DAB was used as the chromogen. The section was then counterstained with haematoxylin and mounted with DPX.

Please note: All products are 'FOR RESEARCH USE ONLY. NOT FOR USE IN DIAGNOSTIC OR THERAPEUTIC PROCEDURES'.