

# Anti-CDC2 (pY15) Antibody

Rabbit polyclonal antibody to CDC2 (pY15)  
Catalog # AP59982

## Product Information

---

<b>Application</b>	WB
<b>Primary Accession</b>	<a href="#">P06493</a>
<b>Other Accession</b>	<a href="#">P11440</a>
<b>Reactivity</b>	Human, Mouse, Rat, Zebrafish, Chicken, Bovine
<b>Host</b>	Rabbit
<b>Clonality</b>	Polyclonal

## Additional Information

---

<b>Other Names</b>	CDC2; CDC28A; CDKN1; P34CDC2; Cyclin-dependent kinase 1; CDK1; Cell division control protein 2 homolog; Cell division protein kinase 1; p34 protein kinase
<b>Target/Specificity</b>	KLH-conjugated synthetic peptide encompassing a sequence within the N-term region of human CDC2 (pY15). The exact sequence is proprietary.
<b>Dilution</b>	WB--WB (1/500 - 1/1000)
<b>Format</b>	Liquid in 0.42% Potassium phosphate, 0.87% Sodium chloride, pH 7.3, 30% glycerol, and 0.09% (W/V) sodium azide.
<b>Storage</b>	Store at -20 °C. Stable for 12 months from date of receipt

## Protein Information

---

### Background

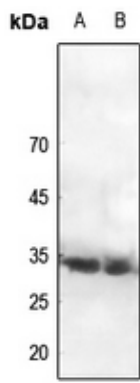
---

KLH-conjugated synthetic peptide encompassing a sequence within the N-term region of human CDC2 (pY15). The exact sequence is proprietary.

### Images

---

Western blot analysis of CDC2 (pY15) expression in HEK293T (A), HeLa (B) whole cell lysates.



Please note: All products are 'FOR RESEARCH USE ONLY. NOT FOR USE IN DIAGNOSTIC OR THERAPEUTIC PROCEDURES'.