

# Anti-LI Cadherin Antibody

Rabbit polyclonal antibody to LI Cadherin

Catalog # AP59985

## Product Information

---

Application	WB, IHC
Primary Accession	<a href="#">Q12864</a>
Reactivity	Human
Host	Rabbit
Clonality	Polyclonal
Calculated MW	92219

## Additional Information

---

Gene ID	1015
Other Names	Cadherin-17; Intestinal peptide-associated transporter HPT-1; Liver-intestine cadherin; LI-cadherin
Target/Specificity	Recognizes endogenous levels of LI Cadherin protein.
Dilution	WB~~WB (1/500 - 1/1000), IHC (1/100 - 1/200) IHC~~WB (1/500 - 1/1000), IHC (1/100 - 1/200)
Format	Liquid in 0.42% Potassium phosphate, 0.87% Sodium chloride, pH 7.3, 30% glycerol, and 0.09% (W/V) sodium azide.
Storage	Store at -20 °C.Stable for 12 months from date of receipt

## Protein Information

---

Name	CDH17
Function	Cadherins are calcium-dependent cell adhesion proteins. They preferentially interact with themselves in a homophilic manner in connecting cells; cadherins may thus contribute to the sorting of heterogeneous cell types. LI-cadherin may have a role in the morphological organization of liver and intestine. Involved in intestinal peptide transport.
Cellular Location	Cell membrane; Single-pass type I membrane protein
Tissue Location	Expressed in the gastrointestinal tract and pancreatic duct. Not detected in kidney, lung, liver, brain, adrenal gland and skin.

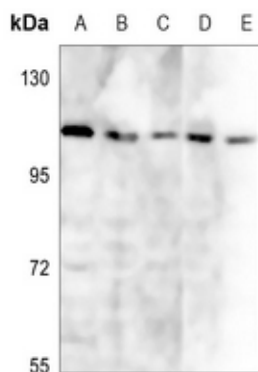
## Background

---

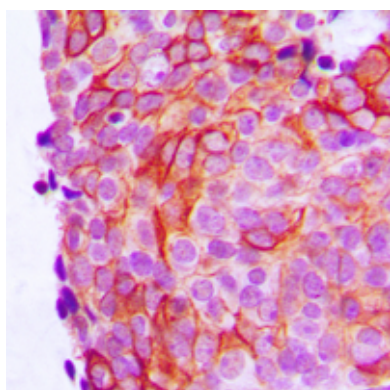
KLH-conjugated synthetic peptide encompassing a sequence within the center region of human LI Cadherin. The exact sequence is proprietary.

## Images

---



Western blot analysis of LI Cadherin expression in Hela (A), DLD (B), A375 (C), H446 (D), A549 (E) whole cell lysates.



Immunohistochemical analysis of LI Cadherin staining in human breast cancer formalin fixed paraffin embedded tissue section. The section was pre-treated using heat mediated antigen retrieval with sodium citrate buffer (pH 6.0). The section was then incubated with the antibody at room temperature and detected using an HRP conjugated compact polymer system. DAB was used as the chromogen. The section was then counterstained with haematoxylin and mounted with DPX.

Please note: All products are 'FOR RESEARCH USE ONLY. NOT FOR USE IN DIAGNOSTIC OR THERAPEUTIC PROCEDURES'.