

# Anti-ATF6B Antibody

Rabbit polyclonal antibody to ATF6B  
Catalog # AP59990

## Product Information

---

Application	WB
Primary Accession	<a href="#">Q99941</a>
Other Accession	<a href="#">Q35451</a>
Reactivity	Human, Mouse, Rat
Host	Rabbit
Clonality	Polyclonal
Calculated MW	76709

## Additional Information

---

Gene ID	1388
Other Names	CREBL1; G13; Cyclic AMP-dependent transcription factor ATF-6 beta; cAMP-dependent transcription factor ATF-6 beta; Activating transcription factor 6 beta; ATF6-beta; Protein G13; cAMP response element-binding protein-related protein; Creb-rp; cAMP-responsive element-binding protein-like 1
Target/Specificity	Recognizes endogenous levels of ATF6B protein.
Dilution	WB~~WB (1/500 - 1/1000)
Format	Liquid in 0.42% Potassium phosphate, 0.87% Sodium chloride, pH 7.3, 30% glycerol, and 0.09% (W/V) sodium azide.
Storage	Store at -20 °C.Stable for 12 months from date of receipt

## Protein Information

---

Name	ATF6B
Synonyms	CREBL1, G13
Function	<p>[Cyclic AMP-dependent transcription factor ATF-6 beta]: Precursor of the transcription factor form (Processed cyclic AMP- dependent transcription factor ATF-6 beta), which is embedded in the endoplasmic reticulum membrane (PubMed:<a href="#">11256944</a>). Endoplasmic reticulum stress promotes processing of this form, releasing the transcription factor form that translocates into the nucleus, where it activates transcription of genes involved in the unfolded protein response (UPR) (PubMed:<a href="#">11256944</a>).</p> <p>Endoplasmic reticulum membrane; Single-pass type II membrane protein</p>

**Cellular Location****Tissue Location**

Ubiquitous..

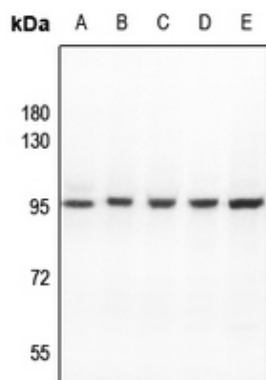
## Background

---

KLH-conjugated synthetic peptide encompassing a sequence within the center region of human ATF6B. The exact sequence is proprietary.

## Images

---



Western blot analysis of ATF6B expression in mouse embryo (A), C6 (B), CT26 (C), DLD (D), A2780 (E) whole cell lysates.

Please note: All products are 'FOR RESEARCH USE ONLY. NOT FOR USE IN DIAGNOSTIC OR THERAPEUTIC PROCEDURES'.