

Anti-CRHR1 Antibody

Rabbit polyclonal antibody to CRHR1

Catalog # AP59991

Product Information

Application	WB
Primary Accession	P34998
Other Accession	P35347
Reactivity	Human, Mouse, Rat
Host	Rabbit
Clonality	Polyclonal
Calculated MW	47671

Additional Information

Gene ID	1394
Other Names	CRFR; CRFR1; CRHR; Corticotropin-releasing factor receptor 1; CRF-R-1; CRF-R1; CRFR-1; Corticotropin-releasing hormone receptor 1; CRH-R-1; CRH-R1
Target/Specificity	Recognizes endogenous levels of CRHR1 protein.
Dilution	WB~~WB (1/500 - 1/1000)
Format	Liquid in 0.42% Potassium phosphate, 0.87% Sodium chloride, pH 7.3, 30% glycerol, and 0.09% (W/V) sodium azide.
Storage	Store at -20 °C.Stable for 12 months from date of receipt

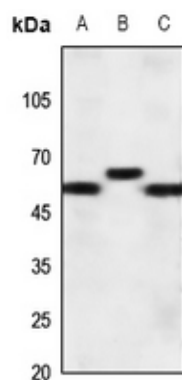
Protein Information

Name	CRHR1 (HGNC:2357)
Function	G-protein coupled receptor for CRH (corticotropin-releasing factor) and UCN (urocortin). Has high affinity for CRH and UCN. Ligand binding causes a conformation change that triggers signaling via guanine nucleotide-binding proteins (G proteins) and down-stream effectors, such as adenylate cyclase. Promotes the activation of adenylate cyclase, leading to increased intracellular cAMP levels. Inhibits the activity of the calcium channel CACNA1H. Required for normal embryonic development of the adrenal gland and for normal hormonal responses to stress. Plays a role in the response to anxiogenic stimuli.
Cellular Location	Cell membrane; Multi-pass membrane protein. Endosome. Note=Agonist-binding promotes endocytosis Predominantly expressed in the cerebellum, pituitary, cerebral cortex and

Background

KLH-conjugated synthetic peptide encompassing a sequence within the center region of human CRHR1. The exact sequence is proprietary.

Images



Western blot analysis of CRHR1 expression in HEK293T (A), HeLa (B), DLD (C) whole cell lysates.

Please note: All products are 'FOR RESEARCH USE ONLY. NOT FOR USE IN DIAGNOSTIC OR THERAPEUTIC PROCEDURES'.