

# Anti-CRK Antibody

Rabbit polyclonal antibody to CRK  
Catalog # AP59992

## Product Information

---

<b>Application</b>	WB, IHC
<b>Primary Accession</b>	<a href="#">P46108</a>
<b>Other Accession</b>	<a href="#">Q64010</a>
<b>Reactivity</b>	Human, Mouse, Rat
<b>Host</b>	Rabbit
<b>Clonality</b>	Polyclonal
<b>Calculated MW</b>	33831

## Additional Information

---

<b>Gene ID</b>	1398
<b>Other Names</b>	Adapter molecule crk; Proto-oncogene c-Crk; p38
<b>Target/Specificity</b>	Recognizes endogenous levels of CRK protein.
<b>Dilution</b>	WB~~WB (1/500 - 1/1000), IHC (1/100 - 1/200) IHC~~WB (1/500 - 1/1000), IHC (1/100 - 1/200)
<b>Format</b>	Liquid in 0.42% Potassium phosphate, 0.87% Sodium chloride, pH 7.3, 30% glycerol, and 0.09% (W/V) sodium azide.
<b>Storage</b>	Store at -20 °C.Stable for 12 months from date of receipt

## Protein Information

---

<b>Name</b>	CRK
<b>Function</b>	Involved in cell branching and adhesion mediated by BCAR1- CRK-RAPGEF1 signaling and activation of RAP1.
<b>Cellular Location</b>	Cytoplasm. Cell membrane. Note=Translocated to the plasma membrane upon cell adhesion.

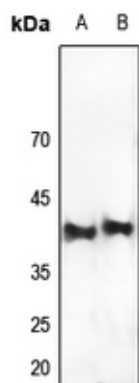
## Background

---

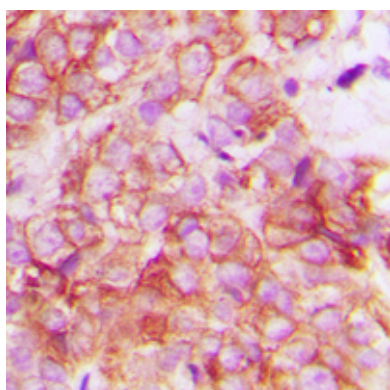
KLH-conjugated synthetic peptide encompassing a sequence within the center region of human CRK. The exact sequence is proprietary.

## Images

---



Western blot analysis of CRK expression in mouse liver (A), rat liver (B) whole cell lysates.



Immunohistochemical analysis of CRK staining in human breast cancer formalin fixed paraffin embedded tissue section. The section was pre-treated using heat mediated antigen retrieval with sodium citrate buffer (pH 6.0). The section was then incubated with the antibody at room temperature and detected using an HRP conjugated compact polymer system. DAB was used as the chromogen. The section was then counterstained with haematoxylin and mounted with DPX.

Please note: All products are 'FOR RESEARCH USE ONLY. NOT FOR USE IN DIAGNOSTIC OR THERAPEUTIC PROCEDURES'.