

Anti-MEGF9 Antibody

Rabbit polyclonal antibody to MEGF9

Catalog # AP60001

Product Information

Application	WB
Primary Accession	Q9H1U4
Reactivity	Human, Rat, Monkey
Host	Rabbit
Clonality	Polyclonal
Calculated MW	62984

Additional Information

Gene ID	1955
Other Names	EGFL5; KIAA0818; Multiple epidermal growth factor-like domains protein 9; Multiple EGF-like domains protein 9; Epidermal growth factor-like protein 5; EGF-like protein 5
Target/Specificity	Recognizes endogenous levels of MEGF9 protein.
Dilution	WB~~WB (1/500 - 1/1000)
Format	Liquid in 0.42% Potassium phosphate, 0.87% Sodium chloride, pH 7.3, 30% glycerol, and 0.09% (W/V) sodium azide.
Storage	Store at -20 °C.Stable for 12 months from date of receipt

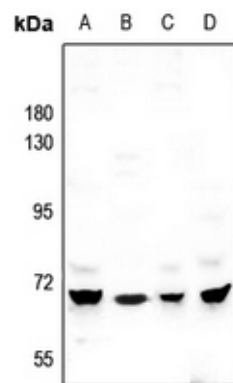
Protein Information

Name	MEGF9
Synonyms	EGFL5, KIAA0818
Cellular Location	Membrane; Single-pass type I membrane protein

Background

KLH-conjugated synthetic peptide encompassing a sequence within the center region of human MEGF9. The exact sequence is proprietary.

Images



Western blot analysis of MEGF9 expression in A549 (A), HepG2 (B), LO2 (C), PC12 (D) whole cell lysates.

Please note: All products are 'FOR RESEARCH USE ONLY. NOT FOR USE IN DIAGNOSTIC OR THERAPEUTIC PROCEDURES'.