

# Anti-NET (pS357) Antibody

Rabbit polyclonal antibody to NET (pS357)

Catalog # AP60002

## Product Information

---

<b>Application</b>	WB, IP, IF/IC
<b>Primary Accession</b>	<a href="#">P41970</a>
<b>Other Accession</b>	<a href="#">P41971</a>
<b>Reactivity</b>	Human, Mouse, Rat, Zebrafish, Bovine
<b>Host</b>	Rabbit
<b>Clonality</b>	Polyclonal
<b>Calculated MW</b>	44240

## Additional Information

---

<b>Gene ID</b>	2004
<b>Other Names</b>	NET; SAP2; ETS domain-containing protein Elk-3; ETS-related protein ERP; ETS-related protein NET; Serum response factor accessory protein 2; SAP-2; SRF accessory protein 2
<b>Target/Specificity</b>	KLH-conjugated synthetic peptide encompassing a sequence within the C-term region of human NET (pS357). The exact sequence is proprietary.
<b>Dilution</b>	WB~~WB (1/500 - 1/1000), IF/IC (1/100 - 1/500), IP (1/10 - 1/100) IP~~N/A IF/IC~~N/A
<b>Format</b>	Liquid in 0.42% Potassium phosphate, 0.87% Sodium chloride, pH 7.3, 30% glycerol, and 0.09% (W/V) sodium azide.
<b>Storage</b>	Store at -20 °C. Stable for 12 months from date of receipt

## Protein Information

---

<b>Name</b>	ELK3
<b>Synonyms</b>	NET, SAP2
<b>Function</b>	May be a negative regulator of transcription, but can activate transcription when coexpressed with Ras, Src or Mos. Forms a ternary complex with the serum response factor and the ETS and SRF motifs of the Fos serum response element.
<b>Cellular Location</b>	Nucleus.

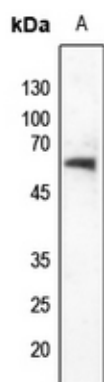
## Background

---

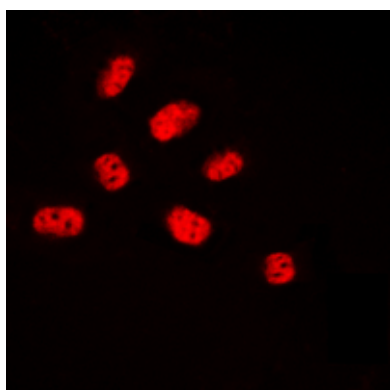
KLH-conjugated synthetic peptide encompassing a sequence within the C-term region of human NET (pS357). The exact sequence is proprietary.

## Images

---



Western blot analysis of NET (pS357) expression in zebrafish (A) whole cell lysates.



Immunofluorescent analysis of NET (pS357) staining in HUVEC cells. Formalin-fixed cells were permeabilized with 0.1% Triton X-100 in TBS for 5-10 minutes and blocked with 3% BSA-PBS for 30 minutes at room temperature. Cells were probed with the primary antibody in 3% BSA-PBS and incubated overnight at 4 °C in a humidified chamber. Cells were washed with PBST and incubated with a DyLight 594-conjugated secondary antibody (red) in PBS at room temperature in the dark.

Please note: All products are 'FOR RESEARCH USE ONLY. NOT FOR USE IN DIAGNOSTIC OR THERAPEUTIC PROCEDURES'.