

Anti-Connexin 37 Antibody

Rabbit polyclonal antibody to Connexin 37

Catalog # AP60007

Product Information

Application	WB
Primary Accession	P35212
Other Accession	P28235
Reactivity	Human, Mouse, Rat, Rabbit, Pig, Bovine, SARS
Host	Rabbit
Clonality	Polyclonal
Calculated MW	37414

Additional Information

Gene ID	2701
Other Names	Gap junction alpha-4 protein; Connexin-37; Cx37
Target/Specificity	KLH-conjugated synthetic peptide encompassing a sequence within the center region of human Connexin 37. The exact sequence is proprietary.
Dilution	WB~~WB (1/500 - 1/1000)
Format	Liquid in 0.42% Potassium phosphate, 0.87% Sodium chloride, pH 7.3, 30% glycerol, and 0.09% (W/V) sodium azide.
Storage	Store at -20 °C.Stable for 12 months from date of receipt

Protein Information

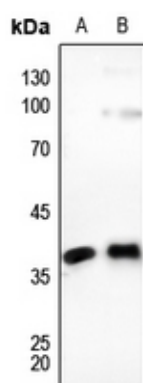
Name	GJA4
Function	One gap junction consists of a cluster of closely packed pairs of transmembrane channels, the connexons, through which materials of low MW diffuse from one cell to a neighboring cell.
Cellular Location	Cell membrane; Multi-pass membrane protein. Cell junction, gap junction
Tissue Location	Expressed in multiple organs and tissues, including heart, uterus, ovary, and blood vessel endothelium

Background

KLH-conjugated synthetic peptide encompassing a sequence within the center region of human Connexin

37. The exact sequence is proprietary.

Images



Western blot analysis of Connexin 37 expression in HEK293T (A), HeLa (B) whole cell lysates.

Please note: All products are 'FOR RESEARCH USE ONLY. NOT FOR USE IN DIAGNOSTIC OR THERAPEUTIC PROCEDURES'.