

Anti-IL-16 Antibody

Rabbit polyclonal antibody to IL-16

Catalog # AP60018

Product Information

Application	WB, IP
Primary Accession	Q14005
Other Accession	O54824
Reactivity	Human, Mouse, Rat
Host	Rabbit
Clonality	Polyclonal
Calculated MW	141752

Additional Information

Gene ID	3603
Other Names	Pro-interleukin-16
Target/Specificity	Recognizes endogenous levels of IL-16 protein.
Dilution	WB~~WB (1/500 - 1/1000), IP (1/10 - 1/100) IP~~N/A
Format	Liquid in 0.42% Potassium phosphate, 0.87% Sodium chloride, pH 7.3, 30% glycerol, and 0.09% (W/V) sodium azide.
Storage	Store at -20 °C.Stable for 12 months from date of receipt

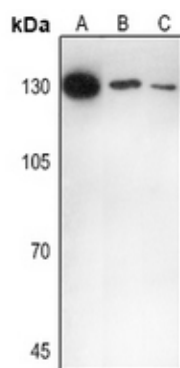
Protein Information

Name	IL16
Function	Interleukin-16 stimulates a migratory response in CD4+ lymphocytes, monocytes, and eosinophils. Primes CD4+ T-cells for IL-2 and IL-15 responsiveness. Also induces T-lymphocyte expression of interleukin 2 receptor. Ligand for CD4. Isoform 3 is involved in cell cycle progression in T-cells. Appears to be involved in transcriptional regulation of SKP2 and is probably part of a transcriptional repression complex on the core promoter of the SKP2 gene. May act as a scaffold for GABPB1 (the DNA- binding subunit the GABP transcription factor complex) and HDAC3 thus maintaining transcriptional repression and blocking cell cycle progression in resting T-cells.
Cellular Location	[Interleukin-16]: Secreted. [Isoform 3]: Cytoplasm. Nucleus.
Tissue Location	[Isoform 3]: Expressed in hemopoietic tissues, such as resting T-cells, but undetectable during active T-cell proliferation

Background

KLH-conjugated synthetic peptide encompassing a sequence within the C-term region of human IL-16. The exact sequence is proprietary.

Images



Western blot analysis of IL-16 expression in HEK293T (A), mouse brain (B), rat liver (C) whole cell lysates.

Please note: All products are 'FOR RESEARCH USE ONLY. NOT FOR USE IN DIAGNOSTIC OR THERAPEUTIC PROCEDURES'.