

# Anti-MEF2A (pT319) Antibody

Rabbit polyclonal antibody to MEF2A (pT319)

Catalog # AP60028

## Product Information

---

<b>Application</b>	WB, IHC
<b>Primary Accession</b>	<a href="#">Q02078</a>
<b>Other Accession</b>	<a href="#">Q60929</a>
<b>Reactivity</b>	Human, Mouse, Rat, Chicken, Bovine
<b>Host</b>	Rabbit
<b>Clonality</b>	Polyclonal
<b>Calculated MW</b>	54811

## Additional Information

---

<b>Gene ID</b>	4205
<b>Other Names</b>	MEF2; Myocyte-specific enhancer factor 2A; Serum response factor-like protein 1
<b>Target/Specificity</b>	Recognizes endogenous levels of MEF2A (pT319) protein.
<b>Dilution</b>	WB~~WB (1/500 - 1/1000), IHC (1/100 - 1/200) IHC~~WB (1/500 - 1/1000), IHC (1/100 - 1/200)
<b>Format</b>	Liquid in 0.42% Potassium phosphate, 0.87% Sodium chloride, pH 7.3, 30% glycerol, and 0.09% (W/V) sodium azide.
<b>Storage</b>	Store at -20 °C.Stable for 12 months from date of receipt

## Protein Information

---

<b>Name</b>	MEF2A
<b>Synonyms</b>	MEF2
<b>Function</b>	Transcriptional activator which binds specifically to the MEF2 element, 5'-YTA[AT](4)TAR-3', found in numerous muscle-specific genes. Also involved in the activation of numerous growth factor- and stress-induced genes. Mediates cellular functions not only in skeletal and cardiac muscle development, but also in neuronal differentiation and survival. Plays diverse roles in the control of cell growth, survival and apoptosis via p38 MAPK signaling in muscle-specific and/or growth factor-related transcription. In cerebellar granule neurons, phosphorylated and sumoylated MEF2A represses transcription of NUR77 promoting synaptic differentiation. Associates with chromatin to the ZNF16 promoter.

**Cellular Location**

Nucleus {ECO:0000255 | PROSITE-ProRule:PRU00251,  
ECO:0000269 | PubMed:12691662, ECO:0000269 | PubMed:16563226}

**Tissue Location**

Isoform MEF2 and isoform MEFA are expressed only in skeletal and cardiac muscle and in the brain. Isoform RSRFC4 and isoform RSRFC9 are expressed in all tissues examined

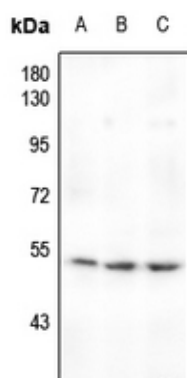
## Background

---

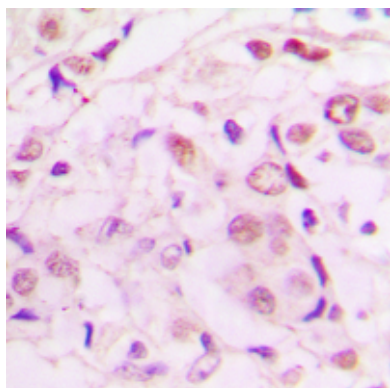
KLH-conjugated synthetic peptide encompassing a sequence within the center region of human MEF2A (pT319). The exact sequence is proprietary.

## Images

---



Western blot analysis of MEF2A (pT319) expression in SP20 (A), EC9706 (B), MCF7 (C) whole cell lysates.



Immunohistochemical analysis of MEF2A (pT319) staining in human lung cancer formalin fixed paraffin embedded tissue section. The section was pre-treated using heat mediated antigen retrieval with sodium citrate buffer (pH 6.0). The section was then incubated with the antibody at room temperature and detected using an HRP conjugated compact polymer system. DAB was used as the chromogen. The section was then counterstained with haematoxylin and mounted with DPX.

Please note: All products are 'FOR RESEARCH USE ONLY. NOT FOR USE IN DIAGNOSTIC OR THERAPEUTIC PROCEDURES'.