

Anti-MMP16 Antibody

Rabbit polyclonal antibody to MMP16

Catalog # AP60031

Product Information

Application	WB
Primary Accession	P51512
Other Accession	Q9WTR0
Reactivity	Human, Mouse, Rat, Rabbit, Monkey, Pig, Chicken, Bovine, Drosophila
Host	Rabbit
Clonality	Polyclonal
Calculated MW	69521

Additional Information

Gene ID	4325
Other Names	MMPX2; Matrix metalloproteinase-16; MMP-16; MMP-X2; Membrane-type matrix metalloproteinase 3; MT-MMP 3; MTMMP3; Membrane-type-3 matrix metalloproteinase; MT3-MMP; MT3MMP
Target/Specificity	Recognizes endogenous levels of MMP16 protein.
Dilution	WB~~WB (1/500 - 1/1000)
Format	Liquid in 0.42% Potassium phosphate, 0.87% Sodium chloride, pH 7.3, 30% glycerol, and 0.09% (W/V) sodium azide.
Storage	Store at -20 °C.Stable for 12 months from date of receipt

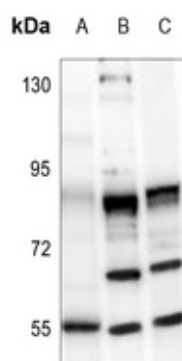
Protein Information

Name	MMP16 (HGNC:7162)
Function	Endopeptidase that degrades various components of the extracellular matrix, such as collagen type III and fibronectin. Activates progelatinase A. Involved in the matrix remodeling of blood vessels. Isoform short cleaves fibronectin and also collagen type III, but at lower rate. It has no effect on type I, II, IV and V collagen. However, upon interaction with CSPG4, it may be involved in degradation and invasion of type I collagen by melanoma cells.
Cellular Location	[Isoform Long]: Cell membrane; Single-pass type I membrane protein; Extracellular side. Note=Localized at the cell surface of melanoma cells
Tissue Location	Expressed in heart, brain, placenta, ovary and small intestine. Isoform Short is found in the ovary

Background

KLH-conjugated synthetic peptide encompassing a sequence within the C-term region of human MMP16. The exact sequence is proprietary.

Images



Western blot analysis of MMP16 expression in U87MG (A), MCF7 (B), BV2 (C) whole cell lysates.

Please note: All products are 'FOR RESEARCH USE ONLY. NOT FOR USE IN DIAGNOSTIC OR THERAPEUTIC PROCEDURES'.