

Anti-MYF6 Antibody

Rabbit polyclonal antibody to MYF6

Catalog # AP60034

Product Information

Application	WB
Primary Accession	P23409
Other Accession	P15375
Reactivity	Human, Mouse, Rat
Host	Rabbit
Clonality	Polyclonal
Calculated MW	26953

Additional Information

Gene ID	4618
Other Names	BHLHC4; MRF4; Myogenic factor 6; Myf-6; Class C basic helix-loop-helix protein 4; bHLHc4; Muscle-specific regulatory factor 4
Target/Specificity	Recognizes endogenous levels of MYF6 protein.
Dilution	WB~~WB (1/500 - 1/1000)
Format	Liquid in 0.42% Potassium phosphate, 0.87% Sodium chloride, pH 7.3, 30% glycerol, and 0.09% (W/V) sodium azide.
Storage	Store at -20 °C.Stable for 12 months from date of receipt

Protein Information

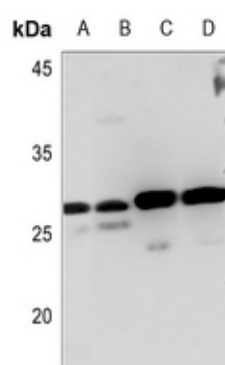
Name	MYF6
Synonyms	BHLHC4, MRF4
Function	Involved in muscle differentiation (myogenic factor). Induces fibroblasts to differentiate into myoblasts. Probable sequence specific DNA-binding protein.
Cellular Location	Nucleus.
Tissue Location	Skeletal muscle.

Background

KLH-conjugated synthetic peptide encompassing a sequence within the center region of human MYF6. The

exact sequence is proprietary.

Images



Western blot analysis of MYF6 expression in HEK293T (A), mouse brain (B), mouse muscle (C), rat muscle (D) whole cell lysates.

Please note: All products are 'FOR RESEARCH USE ONLY. NOT FOR USE IN DIAGNOSTIC OR THERAPEUTIC PROCEDURES'.