

Anti-PKC delta (pY313) Antibody

Rabbit polyclonal antibody to PKC delta (pY313)

Catalog # AP60042

Product Information

Application	WB, IP, IHC
Primary Accession	Q05655
Reactivity	Human, Rat, Monkey
Host	Rabbit
Clonality	Polyclonal

Additional Information

Other Names	Protein kinase C delta type; Tyrosine-protein kinase PRKCD; nPKC-delta
Target/Specificity	KLH-conjugated synthetic peptide encompassing a sequence within the center region of human PKC delta (pY313). The exact sequence is proprietary.
Dilution	WB~~WB (1/500 - 1/1000), IHC (1/100 - 1/200), IP (1/10 - 1/100) IP~~N/A IHC~~WB (1/500 - 1/1000), IHC (1/100 - 1/200), IP (1/10 - 1/100)
Format	Liquid in 0.42% Potassium phosphate, 0.87% Sodium chloride, pH 7.3, 30% glycerol, and 0.09% (W/V) sodium azide.
Storage	Store at -20 °C. Stable for 12 months from date of receipt

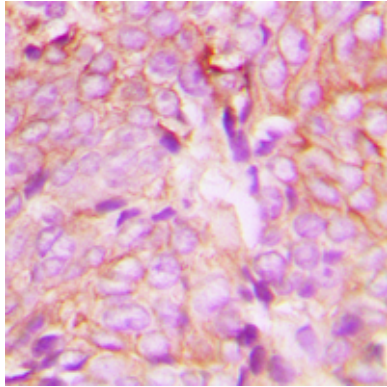
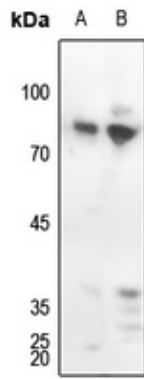
Protein Information

Background

KLH-conjugated synthetic peptide encompassing a sequence within the center region of human PKC delta (pY313). The exact sequence is proprietary.

Images

Western blot analysis of PKC delta (pY313) expression in Hela (A), rat lung (B) whole cell lysates.



Immunohistochemical analysis of PKC delta (pY313) staining in human breast cancer formalin fixed paraffin embedded tissue section. The section was pre-treated using heat mediated antigen retrieval with sodium citrate buffer (pH 6.0). The section was then incubated with the antibody at room temperature and detected using an HRP conjugated compact polymer system. DAB was used as the chromogen. The section was then counterstained with haematoxylin and mounted with DPX.

Please note: All products are 'FOR RESEARCH USE ONLY. NOT FOR USE IN DIAGNOSTIC OR THERAPEUTIC PROCEDURES'.