

# Anti-Matriptase Antibody

Rabbit polyclonal antibody to Matriptase

Catalog # AP60053

## Product Information

---

Application	WB
Primary Accession	<a href="#">Q9Y5Y6</a>
Other Accession	<a href="#">P56677</a>
Reactivity	Human, Mouse
Host	Rabbit
Clonality	Polyclonal
Calculated MW	94770

## Additional Information

---

Gene ID	6768
Other Names	PRSS14; SNC19; TADG15; Suppressor of tumorigenicity 14 protein; Matriptase; Membrane-type serine protease 1; MT-SP1; Prostamin; Serine protease 14; Serine protease TADG-15; Tumor-associated differentially-expressed gene 15 protein
Target/Specificity	Recognizes endogenous levels of Matriptase protein.
Dilution	WB~~WB (1/500 - 1/1000)
Format	Liquid in 0.42% Potassium phosphate, 0.87% Sodium chloride, pH 7.3, 30% glycerol, and 0.09% (W/V) sodium azide.
Storage	Store at -20 °C.Stable for 12 months from date of receipt

## Protein Information

---

Name	ST14
Synonyms	PRSS14, SNC19, TADG15
Function	Exhibits trypsin-like activity as defined by cleavage of synthetic substrates with Arg or Lys as the P1 site (PubMed: <a href="#">10373424</a> ). Involved in the terminal differentiation of keratinocytes through prostatic (PRSS8) activation and filaggrin (FLG) processing (PubMed: <a href="#">18843291</a> ). Proteolytically cleaves and therefore activates TMPRSS13 (PubMed: <a href="#">28710277</a> ).
Cellular Location	Membrane; Single-pass type II membrane protein

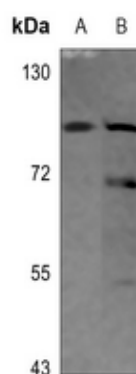
## Background

---

KLH-conjugated synthetic peptide encompassing a sequence within the N-term region of human Matriptase. The exact sequence is proprietary.

## Images

---



Western blot analysis of Matriptase expression in HEK293T (A), CT26 (B) whole cell lysates.

Please note: All products are 'FOR RESEARCH USE ONLY. NOT FOR USE IN DIAGNOSTIC OR THERAPEUTIC PROCEDURES'.