

Anti-TCEB3 Antibody

Rabbit polyclonal antibody to TCEB3

Catalog # AP60059

Product Information

Application	WB, IHC
Primary Accession	Q14241
Reactivity	Human, Rat, Monkey
Host	Rabbit
Clonality	Polyclonal
Calculated MW	87230

Additional Information

Gene ID	6924
Other Names	Transcription elongation factor B polypeptide 3; Elongin 110 kDa subunit; Elongin-A; EloA; RNA polymerase II transcription factor SIII subunit A1; SIII p110
Target/Specificity	KLH-conjugated synthetic peptide encompassing a sequence within the center region of human TCEB3. The exact sequence is proprietary.
Dilution	WB~~WB (1/500 - 1/1000), IHC (1/100 - 1/200) IHC~~WB (1/500 - 1/1000), IHC (1/100 - 1/200)
Format	Liquid in 0.42% Potassium phosphate, 0.87% Sodium chloride, pH 7.3, 30% glycerol, and 0.09% (W/V) sodium azide.
Storage	Store at -20 °C.Stable for 12 months from date of receipt

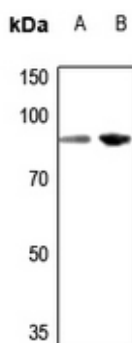
Protein Information

Name	ELOA (HGNC:11620)
Synonyms	TCEB3
Function	SIII, also known as elongin, is a general transcription elongation factor that increases the RNA polymerase II transcription elongation past template-encoded arresting sites. Subunit A is transcriptionally active and its transcription activity is strongly enhanced by binding to the dimeric complex of the SIII regulatory subunits B and C (elongin BC complex).
Cellular Location	Nucleus. Note=Localizes to sites of DNA damage.

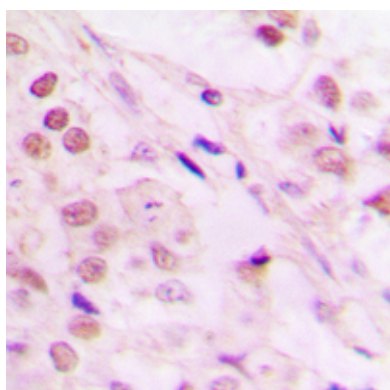
Background

KLH-conjugated synthetic peptide encompassing a sequence within the center region of human TCEB3. The exact sequence is proprietary.

Images



Western blot analysis of TCEB3 expression in rat lung (A), rat liver (B) whole cell lysates.



Immunohistochemical analysis of TCEB3 staining in human lung cancer formalin fixed paraffin embedded tissue section. The section was pre-treated using heat mediated antigen retrieval with sodium citrate buffer (pH 6.0). The section was then incubated with the antibody at room temperature and detected using an HRP conjugated compact polymer system. DAB was used as the chromogen. The section was then counterstained with haematoxylin and mounted with DPX.

Please note: All products are 'FOR RESEARCH USE ONLY. NOT FOR USE IN DIAGNOSTIC OR THERAPEUTIC PROCEDURES'.