

Anti-CD90 Antibody

Rabbit polyclonal antibody to CD90

Catalog # AP60062

Product Information

Application	WB
Primary Accession	P04216
Reactivity	Human
Host	Rabbit
Clonality	Polyclonal
Calculated MW	17935

Additional Information

Gene ID	7070
Other Names	Thy-1 membrane glycoprotein; CDw90; Thy-1 antigen; CD90
Target/Specificity	Recognizes endogenous levels of CD90 protein.
Dilution	WB~~WB (1/500 - 1/1000)
Format	Liquid in 0.42% Potassium phosphate, 0.87% Sodium chloride, pH 7.3, 30% glycerol, and 0.09% (W/V) sodium azide.
Storage	Store at -20 °C.Stable for 12 months from date of receipt

Protein Information

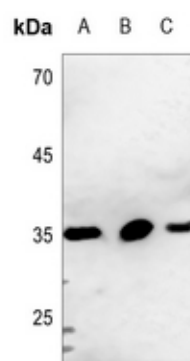
Name	THY1
Function	May play a role in cell-cell or cell-ligand interactions during synaptogenesis and other events in the brain.
Cellular Location	Cell membrane; Lipid-anchor, GPI- anchor

Background

KLH-conjugated synthetic peptide encompassing a sequence within the center region of human CD90. The exact sequence is proprietary.

Images

Western blot analysis of CD90 expression in HEK293T (A),



K562 (B), A549 (C) whole cell lysates.

Please note: All products are 'FOR RESEARCH USE ONLY. NOT FOR USE IN DIAGNOSTIC OR THERAPEUTIC PROCEDURES'.