

Anti-Translin Antibody

Rabbit polyclonal antibody to Translin
Catalog # AP60066

Product Information

Application	WB, IHC
Primary Accession	Q15631
Other Accession	Q62348
Reactivity	Human, Mouse, Rat, Bovine
Host	Rabbit
Clonality	Polyclonal
Calculated MW	26183

Additional Information

Gene ID	7247
Other Names	Translin; Component 3 of promoter of RISC; C3PO
Target/Specificity	Recognizes endogenous levels of Translin protein.
Dilution	WB~~WB (1/500 - 1/1000), IHC (1/100 - 1/200) IHC~~WB (1/500 - 1/1000), IHC (1/100 - 1/200)
Format	Liquid in 0.42% Potassium phosphate, 0.87% Sodium chloride, pH 7.3, 30% glycerol, and 0.09% (W/V) sodium azide.
Storage	Store at -20 °C.Stable for 12 months from date of receipt

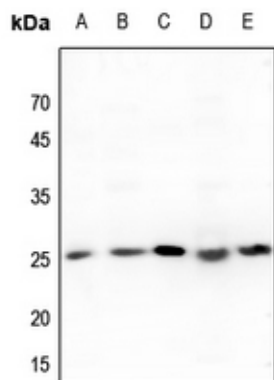
Protein Information

Name	TSN (HGNC:12379)
Function	DNA-binding protein that specifically recognizes consensus sequences at the breakpoint junctions in chromosomal translocations, mostly involving immunoglobulin (Ig)/T-cell receptor gene segments. Seems to recognize single-stranded DNA ends generated by staggered breaks occurring at recombination hot spots.
Cellular Location	Cytoplasm. Nucleus

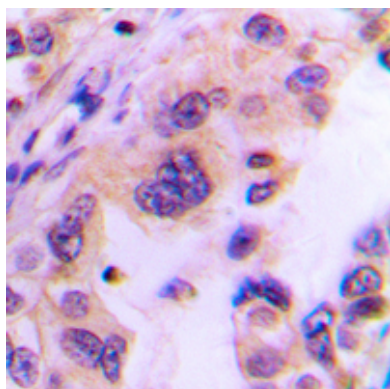
Background

KLH-conjugated synthetic peptide encompassing a sequence within the center region of human Translin. The exact sequence is proprietary.

Images



Western blot analysis of Translin expression in Hela (A), mouse kidney (B), mouse testis (C), rat kidney (D), rat testis (E) whole cell lysates.



Immunohistochemical analysis of Translin staining in human lung cancer formalin fixed paraffin embedded tissue section. The section was pre-treated using heat mediated antigen retrieval with sodium citrate buffer (pH 6.0). The section was then incubated with the antibody at room temperature and detected using an HRP conjugated compact polymer system. DAB was used as the chromogen. The section was then counterstained with haematoxylin and mounted with DPX.

Please note: All products are 'FOR RESEARCH USE ONLY. NOT FOR USE IN DIAGNOSTIC OR THERAPEUTIC PROCEDURES'.