

Anti-CD137L Antibody

Rabbit polyclonal antibody to CD137L

Catalog # AP60071

Product Information

Application	WB
Primary Accession	P41273
Other Accession	P41274
Reactivity	Human, Mouse, Rat
Host	Rabbit
Clonality	Polyclonal
Calculated MW	26625

Additional Information

Gene ID	8744
Other Names	Tumor necrosis factor ligand superfamily member 9; 4-1BB ligand; 4-1BBL
Target/Specificity	KLH-conjugated synthetic peptide encompassing a sequence within the center region of human CD137L. The exact sequence is proprietary.
Dilution	WB~~WB (1/500 - 1/1000)
Format	Liquid in 0.42% Potassium phosphate, 0.87% Sodium chloride, pH 7.3, 30% glycerol, and 0.09% (W/V) sodium azide.
Storage	Store at -20 °C.Stable for 12 months from date of receipt

Protein Information

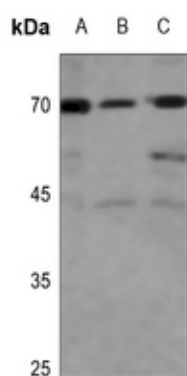
Name	TNFSF9
Function	Cytokine that binds to TNFRSF9. Induces the proliferation of activated peripheral blood T-cells. May have a role in activation- induced cell death (AICD). May play a role in cognate interactions between T-cells and B-cells/macrophages.
Cellular Location	Membrane; Single-pass type II membrane protein.
Tissue Location	Expressed in brain, placenta, lung, skeletal muscle and kidney

Background

KLH-conjugated synthetic peptide encompassing a sequence within the center region of human CD137L. The

exact sequence is proprietary.

Images



Western blot analysis of CD137L expression in HEK293T (A), H1688 (B), A549 (C) whole cell lysates.

Please note: All products are 'FOR RESEARCH USE ONLY. NOT FOR USE IN DIAGNOSTIC OR THERAPEUTIC PROCEDURES'.