

Anti-GALR2 Antibody

Rabbit polyclonal antibody to GALR2

Catalog # AP60072

Product Information

Application	WB
Primary Accession	O43603
Other Accession	O88854
Reactivity	Human, Mouse, Rat, Bovine
Host	Rabbit
Clonality	Polyclonal
Calculated MW	41700

Additional Information

Gene ID	8811
Other Names	GALNR2; Galanin receptor type 2; GAL2-R; GALR-2
Target/Specificity	Recognizes endogenous levels of GALR2 protein.
Dilution	WB~~WB (1/500 - 1/1000)
Format	Liquid in 0.42% Potassium phosphate, 0.87% Sodium chloride, pH 7.3, 30% glycerol, and 0.09% (W/V) sodium azide.
Storage	Store at -20 °C.Stable for 12 months from date of receipt

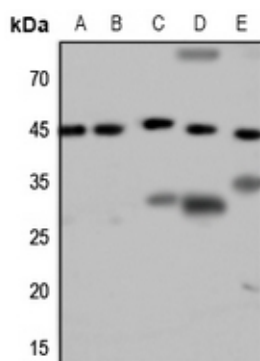
Protein Information

Name	GALR2
Synonyms	GALNR2
Function	Receptor for the hormone galanin and GALP. Receptor for the hormone spexin-1 (PubMed: 24517231). The activity of this receptor is mediated by G proteins that activate the phospholipase C/protein kinase C pathway (via G(q)) and that inhibit adenylyl cyclase (via G(i)).
Cellular Location	Cell membrane; Multi-pass membrane protein.
Tissue Location	Expressed abundantly within the central nervous system in both hypothalamus and hippocampus. In peripheral tissues, the strongest expression was observed in heart, kidney, liver, and small intestine

Background

KLH-conjugated synthetic peptide encompassing a sequence within the center region of human GALR2. The exact sequence is proprietary.

Images



Western blot analysis of GALR2 expression in Hela (A), HepG2 (B), mouse brain (C), mouse kidney (D), rat kidney (E) whole cell lysates.

Please note: All products are 'FOR RESEARCH USE ONLY. NOT FOR USE IN DIAGNOSTIC OR THERAPEUTIC PROCEDURES'.