

Anti-ADAMTS1 Antibody

Rabbit polyclonal antibody to ADAMTS1

Catalog # AP60074

Product Information

Application	WB
Primary Accession	Q9UHI8
Reactivity	Human
Host	Rabbit
Clonality	Polyclonal
Calculated MW	105358

Additional Information

Gene ID	9510
Other Names	KIAA1346; METH1; A disintegrin and metalloproteinase with thrombospondin motifs 1; ADAM-TS 1; ADAM-TS1; ADAMTS-1; METH-1
Target/Specificity	KLH-conjugated synthetic peptide encompassing a sequence within the center region of human ADAMTS1. The exact sequence is proprietary.
Dilution	WB~~WB (1/500 - 1/1000)
Format	Liquid in 0.42% Potassium phosphate, 0.87% Sodium chloride, pH 7.3, 30% glycerol, and 0.09% (W/V) sodium azide.
Storage	Store at -20 °C.Stable for 12 months from date of receipt

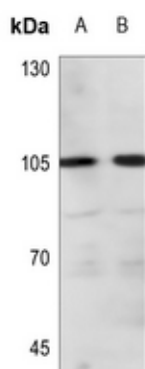
Protein Information

Name	ADAMTS1
Synonyms	KIAA1346, METH1
Function	Metalloprotease which cleaves aggrecan, a cartilage proteoglycan, at the '1938-Glu- -Leu-1939' site (within the chondroitin sulfate attachment domain), and may be involved in its turnover (By similarity). Also cleaves COMP (PubMed: 39672391). Has angiogenic inhibitor activity (PubMed: 10438512). May play a critical role in follicular rupture (By similarity).
Cellular Location	Secreted, extracellular space, extracellular matrix

Background

KLH-conjugated synthetic peptide encompassing a sequence within the center region of human ADAMTS1. The exact sequence is proprietary.

Images



Western blot analysis of ADAMTS1 expression in A549 (A), H446 (B) whole cell lysates.

Please note: All products are 'FOR RESEARCH USE ONLY. NOT FOR USE IN DIAGNOSTIC OR THERAPEUTIC PROCEDURES'.