

# Anti-ZEB2 Antibody

Rabbit polyclonal antibody to ZEB2  
Catalog # AP60078

## Product Information

<b>Application</b>	WB, IHC
<b>Primary Accession</b>	<a href="#">O60315</a>
<b>Reactivity</b>	Human, Rat, Rabbit, Monkey
<b>Host</b>	Rabbit
<b>Clonality</b>	Polyclonal
<b>Calculated MW</b>	136447

## Additional Information

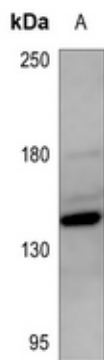
<b>Gene ID</b>	9839
<b>Other Names</b>	KIAA0569; SIP1; ZFHX1B; ZFX1B; Zinc finger E-box-binding homeobox 2; Smad-interacting protein 1; SMADIP1; Zinc finger homeobox protein 1b
<b>Target/Specificity</b>	Recognizes endogenous levels of ZEB2 protein.
<b>Dilution</b>	WB~~WB (1/500 - 1/1000), IHC (1/100 - 1/200) IHC~~WB (1/500 - 1/1000), IHC (1/100 - 1/200)
<b>Format</b>	Liquid in 0.42% Potassium phosphate, 0.87% Sodium chloride, pH 7.3, 30% glycerol, and 0.09% (W/V) sodium azide.
<b>Storage</b>	Store at -20 °C.Stable for 12 months from date of receipt

## Protein Information

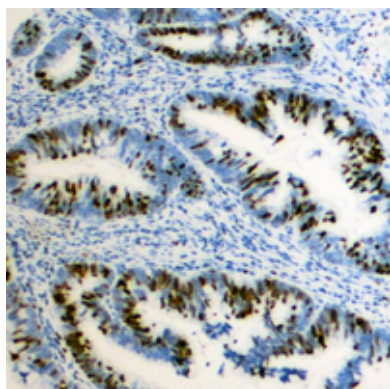
<b>Name</b>	ZEB2 ( <a href="#">HGNC:14881</a> )
<b>Function</b>	Transcriptional inhibitor that binds to DNA sequence 5'- CACCT-3' in different promoters (PubMed: <a href="#">16061479</a> , PubMed: <a href="#">20516212</a> ). Represses transcription of E-cadherin (PubMed: <a href="#">16061479</a> ). Represses expression of MEOX2 (PubMed: <a href="#">20516212</a> ).
<b>Cellular Location</b>	Nucleus. Chromosome

## Background

KLH-conjugated synthetic peptide encompassing a sequence within the N-term region of human ZEB2. The exact sequence is proprietary.



Western blot analysis of ZEB2 expression in mouse liver (A) whole cell lysates.



Immunohistochemical analysis of ZEB2 staining in human colon cancer formalin fixed paraffin embedded tissue section. The section was pre-treated using heat mediated antigen retrieval with sodium citrate buffer (pH 6.0). The section was then incubated with the antibody at room temperature and detected using an HRP conjugated compact polymer system. DAB was used as the chromogen. The section was then counterstained with haematoxylin and mounted with DPX.

Please note: All products are 'FOR RESEARCH USE ONLY. NOT FOR USE IN DIAGNOSTIC OR THERAPEUTIC PROCEDURES'.