

# Anti-CD2BP2 Antibody

Rabbit polyclonal antibody to CD2BP2

Catalog # AP60084

## Product Information

---

<b>Application</b>	WB, IHC
<b>Primary Accession</b>	<a href="#">O95400</a>
<b>Reactivity</b>	Human, Monkey
<b>Host</b>	Rabbit
<b>Clonality</b>	Polyclonal
<b>Calculated MW</b>	37646

## Additional Information

---

<b>Gene ID</b>	10421
<b>Other Names</b>	KIAA1178; CD2 antigen cytoplasmic tail-binding protein 2; CD2 cytoplasmic domain-binding protein 2; CD2 tail-binding protein 2; U5 snRNP 52K protein; U5-52K
<b>Target/Specificity</b>	Recognizes endogenous levels of CD2BP2 protein.
<b>Dilution</b>	WB~~WB (1/500 - 1/1000), IHC (1/100 - 1/200) IHC~~WB (1/500 - 1/1000), IHC (1/100 - 1/200)
<b>Format</b>	Liquid in 0.42% Potassium phosphate, 0.87% Sodium chloride, pH 7.3, 30% glycerol, and 0.09% (W/V) sodium azide.
<b>Storage</b>	Store at -20 °C.Stable for 12 months from date of receipt

## Protein Information

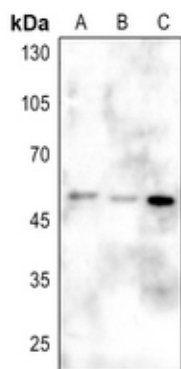
---

<b>Name</b>	CD2BP2
<b>Synonyms</b>	KIAA1178
<b>Function</b>	Involved in pre-mRNA splicing as component of the U5 snRNP complex that is involved in spliceosome assembly.
<b>Cellular Location</b>	Cytoplasm. Nucleus. Note=Predominantly nuclear.

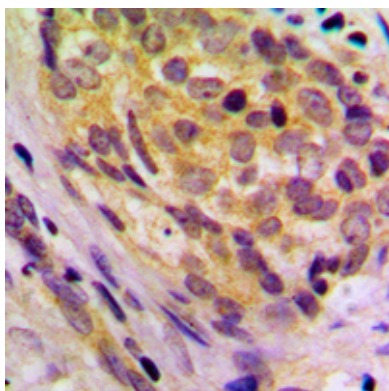
## Background

---

KLH-conjugated synthetic peptide encompassing a sequence within the center region of human CD2BP2. The exact sequence is proprietary.



Western blot analysis of CD2BP2 expression in HEK293T (A), Hela (B), H1688 (C) whole cell lysates.



Immunohistochemical analysis of CD2BP2 staining in human breast cancer formalin fixed paraffin embedded tissue section. The section was pre-treated using heat mediated antigen retrieval with sodium citrate buffer (pH 6.0). The section was then incubated with the antibody at room temperature and detected using an HRP conjugated compact polymer system. DAB was used as the chromogen. The section was then counterstained with haematoxylin and mounted with DPX.

Please note: All products are 'FOR RESEARCH USE ONLY. NOT FOR USE IN DIAGNOSTIC OR THERAPEUTIC PROCEDURES'.