

Anti-CRMP3 Antibody

Rabbit polyclonal antibody to CRMP3

Catalog # AP60087

Product Information

Application	WB
Primary Accession	O14531
Other Accession	O35098
Reactivity	Human, Mouse, Rat
Host	Rabbit
Clonality	Polyclonal
Calculated MW	61878

Additional Information

Gene ID	10570
Other Names	CRMP3; ULIP4; Dihydropyrimidinase-related protein 4; DRP-4; Collapsin response mediator protein 3; CRMP-3; UNC33-like phosphoprotein 4; ULIP-4
Target/Specificity	KLH-conjugated synthetic peptide encompassing a sequence within the center region of human CRMP3. The exact sequence is proprietary.
Dilution	WB~~WB (1/500 - 1/1000)
Format	Liquid in 0.42% Potassium phosphate, 0.87% Sodium chloride, pH 7.3, 30% glycerol, and 0.09% (W/V) sodium azide.
Storage	Store at -20 °C.Stable for 12 months from date of receipt

Protein Information

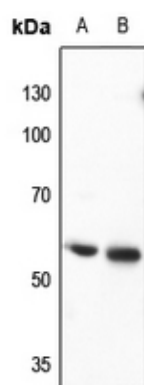
Name	DPYSL4
Synonyms	CRMP3, ULIP4
Function	Necessary for signaling by class 3 semaphorins and subsequent remodeling of the cytoskeleton. Plays a role in axon guidance, neuronal growth cone collapse and cell migration (By similarity).
Cellular Location	Cytoplasm.

Background

KLH-conjugated synthetic peptide encompassing a sequence within the center region of human CRMP3. The

exact sequence is proprietary.

Images



Western blot analysis of CRMP3 expression in HEK293T (A), H446 (B) whole cell lysates.

Please note: All products are 'FOR RESEARCH USE ONLY. NOT FOR USE IN DIAGNOSTIC OR THERAPEUTIC PROCEDURES'.