

Anti-FATP5 Antibody

Rabbit polyclonal antibody to FATP5
Catalog # AP60091

Product Information

Application	WB, IF/IC, IHC
Primary Accession	Q9Y2P5
Reactivity	Human
Host	Rabbit
Clonality	Polyclonal

Additional Information

Other Names	ACSB; ACSVL6; FACVL3; FATP5; Bile acyl-CoA synthetase; BACS; Bile acid-CoA ligase; BA-CoA ligase; BAL; Cholate--CoA ligase; Fatty acid transport protein 5; FATP-5; Fatty-acid-coenzyme A ligase, very long-chain 3; Solute carrier family 27 member 5; Very long-chain acyl-CoA synthetase homolog 2; VLCS-H2; VLCSH2; Very long-chain acyl-CoA synthetase-related protein; VLACS-related; VLACSR
Target/Specificity	KLH-conjugated synthetic peptide encompassing a sequence within the center region of human FATP5. The exact sequence is proprietary.
Dilution	WB--WB (1/500 - 1/1000), IHC (1/100 - 1/200), IF/IC (1/100 - 1/500) IF/IC--N/A IHC--WB (1/500 - 1/1000), IHC (1/100 - 1/200), IF/IC (1/100 - 1/500)
Format	Liquid in 0.42% Potassium phosphate, 0.87% Sodium chloride, pH 7.3, 30% glycerol, and 0.09% (W/V) sodium azide.
Storage	Store at -20 °C. Stable for 12 months from date of receipt

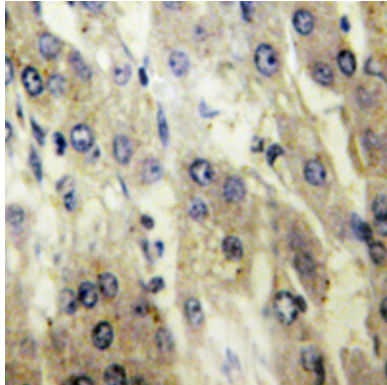
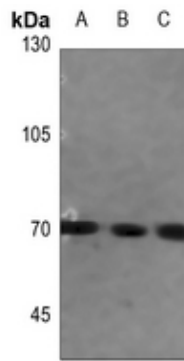
Protein Information

Background

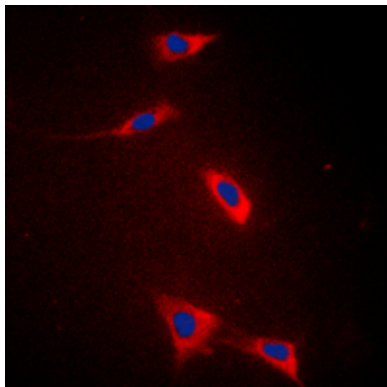
KLH-conjugated synthetic peptide encompassing a sequence within the center region of human FATP5. The exact sequence is proprietary.

Images

Western blot analysis of FATP5 expression in MCF7 (A), U2OS (B), DLD (C) whole cell lysates.



Immunohistochemical analysis of FATP5 staining in human liver formalin fixed paraffin embedded tissue section. The section was pre-treated using heat mediated antigen retrieval with sodium citrate buffer (pH 6.0). The section was then incubated with the antibody at room temperature and detected using an HRP conjugated compact polymer system. DAB was used as the chromogen. The section was then counterstained with haematoxylin and mounted with DPX.



Immunofluorescent analysis of FATP5 staining in HeLa cells. Formalin-fixed cells were permeabilized with 0.1% Triton X-100 in TBS for 5-10 minutes and blocked with 3% BSA-PBS for 30 minutes at room temperature. Cells were probed with the primary antibody in 3% BSA-PBS and incubated overnight at 4 °C in a humidified chamber. Cells were washed with PBST and incubated with a DyLight 594-conjugated secondary antibody (red) in PBS at room temperature in the dark. DAPI was used to stain the cell nuclei (blue).

Please note: All products are 'FOR RESEARCH USE ONLY. NOT FOR USE IN DIAGNOSTIC OR THERAPEUTIC PROCEDURES'.