

Anti-HBP1 Antibody

Rabbit polyclonal antibody to HBP1

Catalog # AP60099

Product Information

Application	WB, IHC
Primary Accession	O60381
Other Accession	Q8R316
Reactivity	Human, Mouse, Rat, Chicken, Bovine, Drosophila
Host	Rabbit
Clonality	Polyclonal
Calculated MW	57645

Additional Information

Gene ID	26959
Other Names	HMG box-containing protein 1; HMG box transcription factor 1; High mobility group box transcription factor 1
Target/Specificity	KLH-conjugated synthetic peptide encompassing a sequence within the C-term region of human HBP1. The exact sequence is proprietary.
Dilution	WB~~WB (1/500 - 1/1000), IHC (1/100 - 1/200) IHC~~WB (1/500 - 1/1000), IHC (1/100 - 1/200)
Format	Liquid in 0.42% Potassium phosphate, 0.87% Sodium chloride, pH 7.3, 30% glycerol, and 0.09% (W/V) sodium azide.
Storage	Store at -20 °C.Stable for 12 months from date of receipt

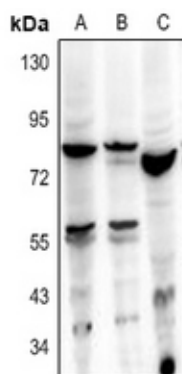
Protein Information

Name	HBP1
Function	Transcriptional repressor that binds to the promoter region of target genes. Plays a role in the regulation of the cell cycle and of the Wnt pathway. Binds preferentially to the sequence 5'- TTCATTCATTCA-3'. Binding to the histone H1.0 promoter is enhanced by interaction with RB1. Disrupts the interaction between DNA and TCF4.
Cellular Location	Nucleus {ECO:0000255 PROSITE-ProRule:PRU00267, ECO:0000269 PubMed:10562551}

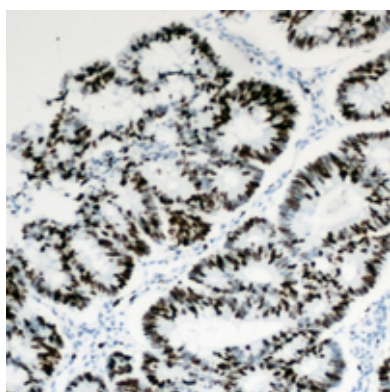
Background

KLH-conjugated synthetic peptide encompassing a sequence within the C-term region of human HBP1. The exact sequence is proprietary.

Images



Western blot analysis of HBP1 expression in A375 (A), MCF7 (B), PC12 (C) whole cell lysates.



Immunohistochemical analysis of HBP1 staining in human colon cancer formalin fixed paraffin embedded tissue section. The section was pre-treated using heat mediated antigen retrieval with sodium citrate buffer (pH 6.0). The section was then incubated with the antibody at room temperature and detected using an HRP conjugated compact polymer system. DAB was used as the chromogen. The section was then counterstained with haematoxylin and mounted with DPX.

Please note: All products are 'FOR RESEARCH USE ONLY. NOT FOR USE IN DIAGNOSTIC OR THERAPEUTIC PROCEDURES'.