

Anti-TRA2A Antibody

Rabbit polyclonal antibody to TRA2A
Catalog # AP60101

Product Information

Application	WB, IF/IC
Primary Accession	Q13595
Other Accession	Q6PFR5
Reactivity	Human, Mouse, Rat, Monkey, Pig, Bovine
Host	Rabbit
Clonality	Polyclonal
Calculated MW	32689

Additional Information

Gene ID	29896
Other Names	Transformer-2 protein homolog alpha; TRA-2 alpha; TRA2-alpha; Transformer-2 protein homolog A
Target/Specificity	Recognizes endogenous levels of TRA2A protein.
Dilution	WB~~WB (1/500 - 1/1000), IF/IC (1/100 - 1/500) IF/IC~~N/A
Format	Liquid in 0.42% Potassium phosphate, 0.87% Sodium chloride, pH 7.3, 30% glycerol, and 0.09% (W/V) sodium azide.
Storage	Store at -20 °C.Stable for 12 months from date of receipt

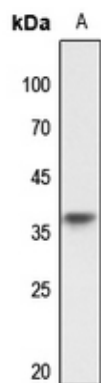
Protein Information

Name	TRA2A (HGNC:16645)
Function	Sequence-specific RNA-binding protein which participates in the control of pre-mRNA splicing.
Cellular Location	Nucleus.

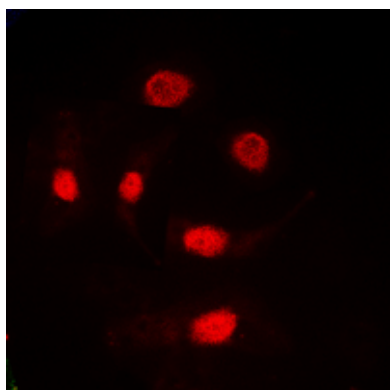
Background

KLH-conjugated synthetic peptide encompassing a sequence within the C-term region of human TRA2A. The exact sequence is proprietary.

Images



Western blot analysis of TRA2A expression in HeLa (A) whole cell lysates.



Immunofluorescent analysis of TRA2A staining in HeLa cells. Formalin-fixed cells were permeabilized with 0.1% Triton X-100 in TBS for 5-10 minutes and blocked with 3% BSA-PBS for 30 minutes at room temperature. Cells were probed with the primary antibody in 3% BSA-PBS and incubated overnight at 4 °C in a humidified chamber. Cells were washed with PBST and incubated with a DyLight 594-conjugated secondary antibody (red) in PBS at room temperature in the dark.

Please note: All products are 'FOR RESEARCH USE ONLY. NOT FOR USE IN DIAGNOSTIC OR THERAPEUTIC PROCEDURES'.