

# Anti-CDKL3 Antibody

Rabbit polyclonal antibody to CDKL3  
Catalog # AP60104

## Product Information

---

Application	WB, IHC
Primary Accession	<a href="#">Q8IVW4</a>
Other Accession	<a href="#">Q8BLF2</a>
Reactivity	Human, Mouse, Rat, Monkey
Host	Rabbit
Clonality	Polyclonal
Calculated MW	67514

## Additional Information

---

Gene ID	51265
Other Names	NKIAMRE; Cyclin-dependent kinase-like 3; Serine/threonine-protein kinase NKIAMRE
Target/Specificity	KLH-conjugated synthetic peptide encompassing a sequence within the center region of human CDKL3. The exact sequence is proprietary.
Dilution	WB~~WB (1/500 - 1/1000), IHC (1/100 - 1/200) IHC~~WB (1/500 - 1/1000), IHC (1/100 - 1/200)
Format	Liquid in 0.42% Potassium phosphate, 0.87% Sodium chloride, pH 7.3, 30% glycerol, and 0.09% (W/V) sodium azide.
Storage	Store at -20 °C.Stable for 12 months from date of receipt

## Protein Information

---

Name	CDKL3 ( <a href="#">HGNC:15483</a> )
Cellular Location	Cytoplasm.

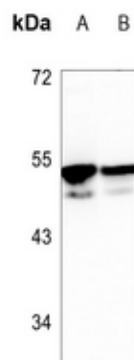
## Background

---

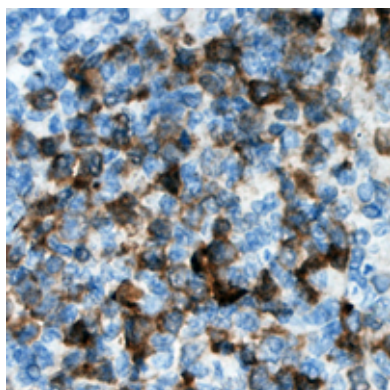
KLH-conjugated synthetic peptide encompassing a sequence within the center region of human CDKL3. The exact sequence is proprietary.

## Images

---



Western blot analysis of CDKL3 expression in mouse heart (A), rat heart (B) whole cell lysates.



Immunohistochemical analysis of CDKL3 staining in human lymph node formalin fixed paraffin embedded tissue section. The section was pre-treated using heat mediated antigen retrieval with sodium citrate buffer (pH 6.0). The section was then incubated with the antibody at room temperature and detected using an HRP conjugated compact polymer system. DAB was used as the chromogen. The section was then counterstained with haematoxylin and mounted with DPX.

Please note: All products are 'FOR RESEARCH USE ONLY. NOT FOR USE IN DIAGNOSTIC OR THERAPEUTIC PROCEDURES'.