

# Anti-CHSY2 Antibody

Rabbit polyclonal antibody to CHSY2  
Catalog # AP60115

## Product Information

Application	WB, IF/IC, IHC
Primary Accession	<a href="#">Q8IZ52</a>
Reactivity	Human, Monkey
Host	Rabbit
Clonality	Polyclonal
Calculated MW	85467

## Additional Information

Gene ID	79586
Other Names	CSS2; Chondroitin sulfate synthase 2; Chondroitin glucuronyltransferase 2; Chondroitin-polymerizing factor; ChPF; Glucuronosyl-N-acetylgalactosaminyl-proteoglycan 4-beta-N-acetylgalactosaminyltransferase II; N-acetylgalactosaminyl-proteoglycan 3-beta-glucuronosyltransferase II; N-acetylgalactosaminyltransferase 2
Target/Specificity	Recognizes endogenous levels of CHSY2 protein.
Dilution	WB~~WB (1/500 - 1/1000), IHC (1/100 - 1/200), IF/IC (1/100 - 1/500) IF/IC~~N/A IHC~~WB (1/500 - 1/1000), IHC (1/100 - 1/200), IF/IC (1/100 - 1/500)
Format	Liquid in 0.42% Potassium phosphate, 0.87% Sodium chloride, pH 7.3, 30% glycerol, and 0.09% (W/V) sodium azide.
Storage	Store at -20 °C.Stable for 12 months from date of receipt

## Protein Information

Name	CHPF ( <a href="#">HGNC:24291</a> )
Synonyms	CSS2
Function	Has both beta-1,3-glucuronic acid and beta-1,4-N- acetylgalactosamine transferase activity. Transfers glucuronic acid (GlcUA) from UDP-GlcUA and N-acetylgalactosamine (GalNAc) from UDP- GalNAc to the non-reducing end of the elongating chondroitin polymer. Seems to act as a specific activating factor for CHSY1 in chondroitin polymerization (PubMed: <a href="#">12716890</a> ).
Cellular Location	[Isoform 1]: Golgi apparatus, Golgi stack membrane; Single-pass type II

membrane protein. Cytoplasm, cytosol [Isoform 2]: Mitochondrion matrix

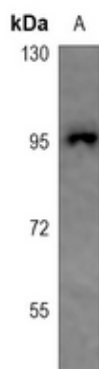
## Tissue Location

Ubiquitous. Highly expressed in pancreas, ovary, brain, heart, skeletal muscle, colon, kidney, liver, stomach, spleen and placenta. [Isoform 3]: Also ubiquitous.

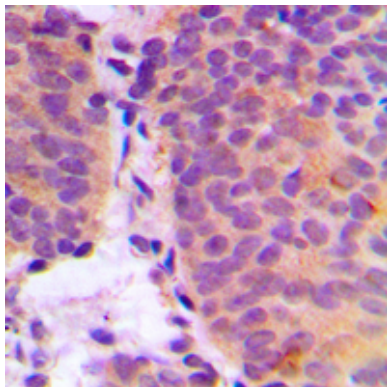
## Background

KLH-conjugated synthetic peptide encompassing a sequence within the C-term region of human CHSY2. The exact sequence is proprietary.

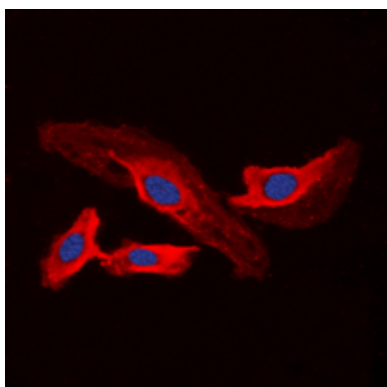
## Images



Western blot analysis of CHSY2 expression in DLD (A) whole cell lysates.



Immunohistochemical analysis of CHSY2 staining in human breast cancer formalin fixed paraffin embedded tissue section. The section was pre-treated using heat mediated antigen retrieval with sodium citrate buffer (pH 6.0). The section was then incubated with the antibody at room temperature and detected using an HRP conjugated compact polymer system. DAB was used as the chromogen. The section was then counterstained with haematoxylin and mounted with DPX.



Immunofluorescent analysis of CHSY2 staining in A549 cells. Formalin-fixed cells were permeabilized with 0.1% Triton X-100 in TBS for 5-10 minutes and blocked with 3% BSA-PBS for 30 minutes at room temperature. Cells were probed with the primary antibody in 3% BSA-PBS and incubated overnight at 4 °C in a humidified chamber. Cells were washed with PBST and incubated with a DyLight 594-conjugated secondary antibody (red) in PBS at room temperature in the dark. DAPI was used to stain the cell nuclei (blue).

Please note: All products are 'FOR RESEARCH USE ONLY. NOT FOR USE IN DIAGNOSTIC OR THERAPEUTIC PROCEDURES'.