

Anti-CEP70 Antibody

Rabbit polyclonal antibody to CEP70

Catalog # AP60119

Product Information

Application	WB, IHC
Primary Accession	Q8NHQ1
Reactivity	Human, Mouse, Rat
Host	Rabbit
Clonality	Polyclonal
Calculated MW	69752

Additional Information

Gene ID	80321
Other Names	BITE; Centrosomal protein of 70 kDa; Cep70; p10-binding protein
Target/Specificity	KLH-conjugated synthetic peptide encompassing a sequence within the center region of human CEP70. The exact sequence is proprietary.
Dilution	WB~~WB (1/500 - 1/1000), IHC (1/100 - 1/200) IHC~~WB (1/500 - 1/1000), IHC (1/100 - 1/200)
Format	Liquid in 0.42% Potassium phosphate, 0.87% Sodium chloride, pH 7.3, 30% glycerol, and 0.09% (W/V) sodium azide.
Storage	Store at -20 °C.Stable for 12 months from date of receipt

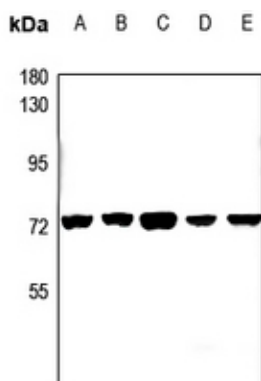
Protein Information

Name	CEP70
Synonyms	BITE
Function	Plays a role in the organization of both preexisting and nascent microtubules in interphase cells. During mitosis, required for the organization and orientation of the mitotic spindle.
Cellular Location	Cytoplasm, cytoskeleton, microtubule organizing center, centrosome. Note=Localized at the center of the radial microtubule array in interphase and at the spindle poles during various stages of mitosis

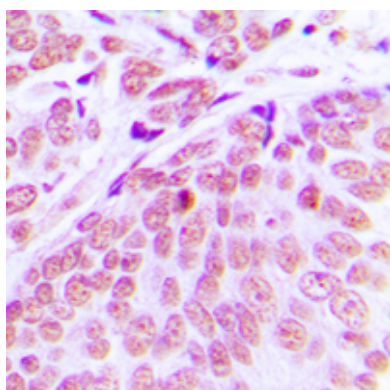
Background

KLH-conjugated synthetic peptide encompassing a sequence within the center region of human CEP70. The exact sequence is proprietary.

Images



Western blot analysis of CEP70 expression in CT26 (A), PC12 (B), Hela (C), H1792 (D), A549 (E) whole cell lysates.



Immunohistochemical analysis of CEP70 staining in human breast cancer formalin fixed paraffin embedded tissue section. The section was pre-treated using heat mediated antigen retrieval with sodium citrate buffer (pH 6.0). The section was then incubated with the antibody at room temperature and detected using an HRP conjugated compact polymer system. DAB was used as the chromogen. The section was then counterstained with haematoxylin and mounted with DPX.

Please note: All products are 'FOR RESEARCH USE ONLY. NOT FOR USE IN DIAGNOSTIC OR THERAPEUTIC PROCEDURES'.