

Anti-USP32 Antibody

Rabbit polyclonal antibody to USP32

Catalog # AP60122

Product Information

Application	WB, IHC
Primary Accession	Q8NFA0
Reactivity	Human, Mouse, Rat, Dog, SARS
Host	Rabbit
Clonality	Polyclonal
Calculated MW	181656

Additional Information

Gene ID	84669
Other Names	USP10; Ubiquitin carboxyl-terminal hydrolase 32; Deubiquitinating enzyme 32; Renal carcinoma antigen NY-REN-60; Ubiquitin thioesterase 32; Ubiquitin-specific-processing protease 32
Target/Specificity	Recognizes endogenous levels of USP32 protein.
Dilution	WB~~WB (1/500 - 1/1000), IHC (1/100 - 1/200) IHC~~WB (1/500 - 1/1000), IHC (1/100 - 1/200)
Format	Liquid in 0.42% Potassium phosphate, 0.87% Sodium chloride, pH 7.3, 30% glycerol, and 0.09% (W/V) sodium azide.
Storage	Store at -20 °C.Stable for 12 months from date of receipt

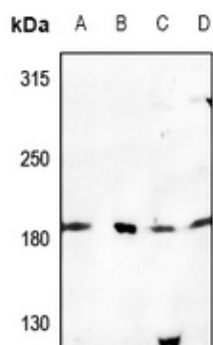
Protein Information

Name	USP32
Synonyms	USP10
Function	Deubiquitinase that can remove conjugated ubiquitin from target proteins, such as RAB7A and LAMTOR1 (PubMed: 36476874). Acts as a positive regulator of the mTORC1 signaling by mediating deubiquitination of LAMTOR1, thereby promoting the association between LAMTOR1 and the lysosomal V-ATPase complex and subsequent activation of the mTORC1 complex (PubMed: 36476874).
Cellular Location	Golgi apparatus membrane; Lipid-anchor

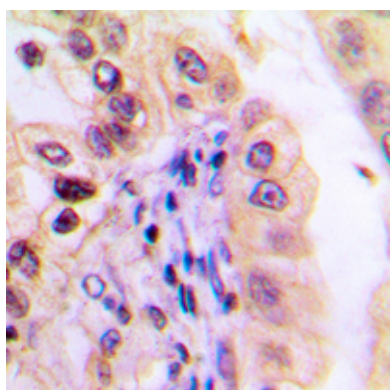
Background

KLH-conjugated synthetic peptide encompassing a sequence within the center region of human USP32. The exact sequence is proprietary.

Images



Western blot analysis of USP32 expression in A549 (A), MCF7 (B), PC12 (C), AML12 (D) whole cell lysates.



Immunohistochemical analysis of USP32 staining in human lung cancer formalin fixed paraffin embedded tissue section. The section was pre-treated using heat mediated antigen retrieval with sodium citrate buffer (pH 6.0). The section was then incubated with the antibody at room temperature and detected using an HRP conjugated compact polymer system. DAB was used as the chromogen. The section was then counterstained with haematoxylin and mounted with DPX.

Please note: All products are 'FOR RESEARCH USE ONLY. NOT FOR USE IN DIAGNOSTIC OR THERAPEUTIC PROCEDURES'.