

Anti-Claudin 19 Antibody

Rabbit polyclonal antibody to Claudin 19

Catalog # AP60126

Product Information

Application	WB
Primary Accession	Q8N6F1
Reactivity	Human, Bovine
Host	Rabbit
Clonality	Polyclonal
Calculated MW	23229

Additional Information

Gene ID	149461
Other Names	Claudin-19
Target/Specificity	Recognizes endogenous levels of Claudin 19 protein.
Dilution	WB~~WB (1/500 - 1/1000)
Format	Liquid in 0.42% Potassium phosphate, 0.87% Sodium chloride, pH 7.3, 30% glycerol, and 0.09% (W/V) sodium azide.
Storage	Store at -20 °C.Stable for 12 months from date of receipt

Protein Information

Name	CLDN19 {ECO:0000303 PubMed:25555744, ECO:0000312 HGNC:HGNC:2040}
Function	<p>Forms paracellular channels: coassembles with CLDN16 into tight junction strands with cation-selective channels through the strands, conveying epithelial permeability in a process known as paracellular tight junction permeability (PubMed:18188451, PubMed:28028216). Involved in the maintenance of ion gradients along the nephron. In the thick ascending limb (TAL) of Henle's loop, facilitates sodium paracellular permeability from the interstitial compartment to the lumen, contributing to the lumen-positive transepithelial potential that drives paracellular magnesium and calcium reabsorption (By similarity) (PubMed:17033971, PubMed:25555744). Forms paracellular barriers on its own. In the peripheral nervous system, represents a major constituent of the tight junctions in Schwann cells and contributes to electrical sealing. During retinal neurogenesis, may regulate the barrier properties of tight junctions in retinal pigment epithelium, required for proper retinal tissue differentiation and vision (By similarity) (PubMed:17033971, PubMed:30937396).</p>

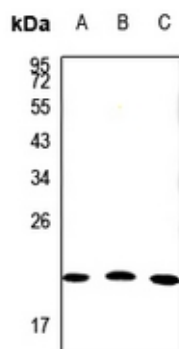
Cellular Location

Cell junction, tight junction. Cell membrane; Multi-pass membrane protein. Note=Cotrafficks with CLDN16 from ER to tight junctions. Colocalizes with CLDN16 and CLDN3 in cell- cell contact areas of the TAL spatially separated from CLDN10b paracellular channels.

Background

KLH-conjugated synthetic peptide encompassing a sequence within the center region of human Claudin 19. The exact sequence is proprietary.

Images



Western blot analysis of Claudin 19 expression in LO2 (A), HEK293T (B), A549 (C) whole cell lysates.

Please note: All products are 'FOR RESEARCH USE ONLY. NOT FOR USE IN DIAGNOSTIC OR THERAPEUTIC PROCEDURES'.