

Anti-DQX1 Antibody

Rabbit polyclonal antibody to DQX1

Catalog # AP60127

Product Information

| | |
|-------------------|---------------------------|
| Application | WB |
| Primary Accession | Q8TE96 |
| Other Accession | Q924H9 |
| Reactivity | Human, Mouse, Rat, Monkey |
| Host | Rabbit |
| Clonality | Polyclonal |
| Calculated MW | 79476 |

Additional Information

| | |
|--------------------|---|
| Gene ID | 165545 |
| Other Names | ATP-dependent RNA helicase DQX1; DEAQ box polypeptide 1 |
| Target/Specificity | Recognizes endogenous levels of DQX1 protein. |
| Dilution | WB~~WB (1/500 - 1/1000) |
| Format | Liquid in 0.42% Potassium phosphate, 0.87% Sodium chloride, pH 7.3, 30% glycerol, and 0.09% (W/V) sodium azide. |
| Storage | Store at -20 °C.Stable for 12 months from date of receipt |

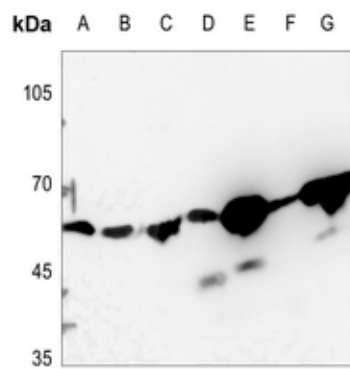
Protein Information

| | |
|-------------------|---|
| Name | DQX1 |
| Function | Might be involved in RNA metabolism; it is missing helicase motif III and may not have helicase activity (PubMed: 11353393). |
| Cellular Location | Nucleus. |

Background

KLH-conjugated synthetic peptide encompassing a sequence within the C-term region of human DQX1. The exact sequence is proprietary.

Images



Western blot analysis of DQX1 expression in A375 (A), U2OS (B), DLD (C), mouse kidney (D), mouse muscle (E), rat kidney (F), rat muscle (G) whole cell lysates.

Please note: All products are 'FOR RESEARCH USE ONLY. NOT FOR USE IN DIAGNOSTIC OR THERAPEUTIC PROCEDURES'.