

Anti-ANKRD20A1 Antibody

Rabbit polyclonal antibody to ANKRD20A1
Catalog # AP60141

Product Information

Application	WB
Primary Accession	Q5TYW2
Reactivity	Human, Mouse, Rat
Host	Rabbit
Clonality	Polyclonal

Additional Information

Other Names	ANKRD20A; Ankyrin repeat domain-containing protein 20A1
Target/Specificity	KLH-conjugated synthetic peptide encompassing a sequence within the center region of human ANKRD20A1. The exact sequence is proprietary.
Dilution	WB~~WB (1/500 - 1/1000)
Format	Liquid in 0.42% Potassium phosphate, 0.87% Sodium chloride, pH 7.3, 30% glycerol, and 0.09% (W/V) sodium azide.
Storage	Store at -20 °C. Stable for 12 months from date of receipt

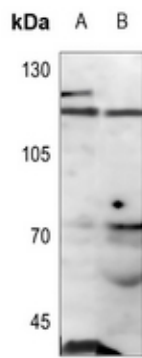
Protein Information

Background

KLH-conjugated synthetic peptide encompassing a sequence within the center region of human ANKRD20A1. The exact sequence is proprietary.

Images

Western blot analysis of ANKRD20A1 expression in mouse liver (A), rat liver (B) whole cell lysates.



Please note: All products are 'FOR RESEARCH USE ONLY. NOT FOR USE IN DIAGNOSTIC OR THERAPEUTIC PROCEDURES'.