

Anti-BAMBI Antibody

Rabbit polyclonal antibody to BAMBI
Catalog # AP60142

Product Information

Application	WB
Primary Accession	Q13145
Other Accession	Q9D0L6
Reactivity	Human, Mouse, Rat, Chicken, Bovine, Dog, SARS
Host	Rabbit
Clonality	Polyclonal
Calculated MW	29108

Additional Information

Gene ID	25805
Other Names	NMA; BMP and activin membrane-bound inhibitor homolog; Non-metastatic gene A protein; Putative transmembrane protein NMA
Target/Specificity	Recognizes endogenous levels of BAMBI protein.
Dilution	WB~~WB (1/500 - 1/1000)
Format	Liquid in 0.42% Potassium phosphate, 0.87% Sodium chloride, pH 7.3, 30% glycerol, and 0.09% (W/V) sodium azide.
Storage	Store at -20 °C.Stable for 12 months from date of receipt

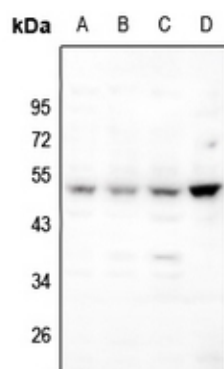
Protein Information

Name	BAMBI
Synonyms	NMA
Function	Negatively regulates TGF-beta signaling.
Cellular Location	Membrane; Single-pass type I membrane protein
Tissue Location	High expression in kidney medulla, placenta and spleen; low in kidney cortex, liver, prostate and gut. Not expressed in normal skin, expression is high in melanocytes and in 3 out of 11 melanoma metastases tested

Background

KLH-conjugated synthetic peptide encompassing a sequence within the center region of human BAMBI. The exact sequence is proprietary.

Images



Western blot analysis of BAMBI expression in A375 (A), HEK293T (B), H1792 (C), mouse embryo (D) whole cell lysates.

Please note: All products are 'FOR RESEARCH USE ONLY. NOT FOR USE IN DIAGNOSTIC OR THERAPEUTIC PROCEDURES'.