

Anti-BGT-1 Antibody

Rabbit polyclonal antibody to BGT-1

Catalog # AP60143

Product Information

Application	WB
Primary Accession	P48065
Other Accession	P31651
Reactivity	Human, Mouse, Rat
Host	Rabbit
Clonality	Polyclonal
Calculated MW	69368

Additional Information

Gene ID	6539
Other Names	Sodium- and chloride-dependent betaine transporter; BGT-1; Na(+)/Cl(-) betaine/GABA transporter; Solute carrier family 6 member 12
Target/Specificity	KLH-conjugated synthetic peptide encompassing a sequence within the C-term region of human BGT-1. The exact sequence is proprietary.
Dilution	WB~~WB (1/500 - 1/1000)
Format	Liquid in 0.42% Potassium phosphate, 0.87% Sodium chloride, pH 7.3, 30% glycerol, and 0.09% (W/V) sodium azide.
Storage	Store at -20 °C.Stable for 12 months from date of receipt

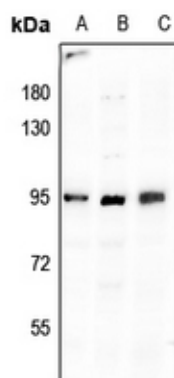
Protein Information

Name	SLC6A12 (HGNC:11045)
Function	Transporter that mediates cellular uptake of betaine and GABA in a sodium- and chloride-dependent process (PubMed: 7589472). May have a role in regulation of GABAergic transmission in the brain through the reuptake of GABA into presynaptic terminals, as well as in osmotic regulation. Probably also involved in renal and hepatic osmotic regulation (By similarity).
Cellular Location	Basolateral cell membrane {ECO:0000250 UniProtKB:P31651}; Multi-pass membrane protein. Cell membrane {ECO:0000250 UniProtKB:P31651}; Multi-pass membrane protein. Note=In kidney, locates in basolateral membranes of renal medulla. In liver, locates in hepatocytes cell membrane. {ECO:0000250 UniProtKB:P31651} Expressed in kidney, liver, heart, skeletal muscle, placenta, and a widespread

Background

KLH-conjugated synthetic peptide encompassing a sequence within the C-term region of human BGT-1. The exact sequence is proprietary.

Images



Western blot analysis of BGT-1 expression in NIH3T3 (A), LO2 (B), SGC7901 (C) whole cell lysates.

Please note: All products are 'FOR RESEARCH USE ONLY. NOT FOR USE IN DIAGNOSTIC OR THERAPEUTIC PROCEDURES'.