

Anti-Cathepsin A 20k Antibody

Rabbit polyclonal antibody to Cathepsin A 20k

Catalog # AP60146

Product Information

Application	WB
Primary Accession	P10619
Other Accession	P16675
Reactivity	Human, Mouse, Rat, Rabbit, Monkey, Drosophila
Host	Rabbit
Clonality	Polyclonal
Calculated MW	54466

Additional Information

Gene ID	5476
Other Names	PPGB; Lysosomal protective protein; Carboxypeptidase C; Carboxypeptidase L; Cathepsin A; Protective protein cathepsin A; PPCA; Protective protein for beta-galactosidase
Target/Specificity	Recognizes endogenous levels of Cathepsin A 20k protein.
Dilution	WB~~WB (1/500 - 1/1000)
Format	Liquid in 0.42% Potassium phosphate, 0.87% Sodium chloride, pH 7.3, 30% glycerol, and 0.09% (W/V) sodium azide.
Storage	Store at -20 °C.Stable for 12 months from date of receipt

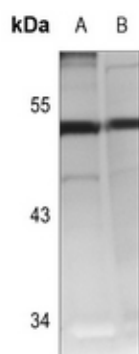
Protein Information

Name	CTSA
Synonyms	PPGB
Function	Protective protein appears to be essential for both the activity of beta-galactosidase and neuraminidase, it associates with these enzymes and exerts a protective function necessary for their stability and activity. This protein is also a carboxypeptidase and can deamidate tachykinins.
Cellular Location	Lysosome.

Background

KLH-conjugated synthetic peptide encompassing a sequence within the center region of human Cathepsin A 20k. The exact sequence is proprietary.

Images



Western blot analysis of Cathepsin A 20k expression in rat liver (A), mouse kidney (B) whole cell lysates.

Please note: All products are 'FOR RESEARCH USE ONLY. NOT FOR USE IN DIAGNOSTIC OR THERAPEUTIC PROCEDURES'.