

Anti-Cathepsin C LC Antibody

Rabbit polyclonal antibody to Cathepsin C LC
Catalog # AP60147

Product Information

| | |
|-------------------|---------------------------------------|
| Application | WB |
| Primary Accession | P53634 |
| Other Accession | P97821 |
| Reactivity | Human, Mouse, Rat, Bovine, Drosophila |
| Host | Rabbit |
| Clonality | Polyclonal |
| Calculated MW | 51854 |

Additional Information

| | |
|--------------------|---------------------------------------------------------------------------------------------------------------------|
| Gene ID | 1075 |
| Other Names | CPPI; Dipeptidyl peptidase 1; Cathepsin C; Cathepsin J; Dipeptidyl peptidase I; DPP-I; DPPI; Dipeptidyl transferase |
| Target/Specificity | Recognizes endogenous levels of Cathepsin C LC protein. |
| Dilution | WB~~WB (1/500 - 1/1000) |
| Format | Liquid in 0.42% Potassium phosphate, 0.87% Sodium chloride, pH 7.3, 30% glycerol, and 0.09% (W/V) sodium azide. |
| Storage | Store at -20 °C.Stable for 12 months from date of receipt |

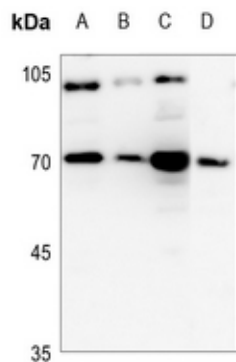
Protein Information

| | |
|-------------------|--------------------------------------------------------------------------------------------------------------------------------------------------------------------------------------------------------------------------------------------------------------------------------------------------------------------------------------------------------------------------------------------------------------------------------------------------------------------------------------------------------------------------------------------------------------------------------------------------------------------|
| Name | CTSC |
| Synonyms | CPPI |
| Function | Thiol protease (PubMed: 1586157). Has dipeptidylpeptidase activity (PubMed: 1586157). Active against a broad range of dipeptide substrates composed of both polar and hydrophobic amino acids (PubMed: 1586157). Proline cannot occupy the P1 position and arginine cannot occupy the P2 position of the substrate (PubMed: 1586157). Can act as both an exopeptidase and endopeptidase (PubMed: 1586157). Activates serine proteases such as elastase, cathepsin G and granzymes A and B (PubMed: 8428921). |
| Cellular Location | Lysosome. |
| Tissue Location | Ubiquitous. Highly expressed in lung, kidney and placenta. Detected at intermediate levels in colon, small intestine, spleen and pancreas. |

Background

KLH-conjugated synthetic peptide encompassing a sequence within the C-term region of human Cathepsin C LC. The exact sequence is proprietary.

Images



Western blot analysis of Cathepsin C LC expression in HeLa (A), H466 (B), mouse lung (C), rat lung (D) whole cell lysates.

Please note: All products are 'FOR RESEARCH USE ONLY. NOT FOR USE IN DIAGNOSTIC OR THERAPEUTIC PROCEDURES'.