

# Anti-CATSPER1 Antibody

Rabbit polyclonal antibody to CATSPER1

Catalog # AP60149

## Product Information

---

Application	WB
Primary Accession	<a href="#">Q8NEC5</a>
Other Accession	<a href="#">Q91ZR5</a>
Reactivity	Human, Mouse, Rat, Monkey
Host	Rabbit
Clonality	Polyclonal
Calculated MW	90091

## Additional Information

---

Gene ID	117144
Other Names	Cation channel sperm-associated protein 1; CatSper1; hCatSper
Target/Specificity	Recognizes endogenous levels of CATSPER1 protein.
Dilution	WB~~WB (1/500 - 1/1000)
Format	Liquid in 0.42% Potassium phosphate, 0.87% Sodium chloride, pH 7.3, 30% glycerol, and 0.09% (W/V) sodium azide.
Storage	Store at -20 °C.Stable for 12 months from date of receipt

## Protein Information

---

Name	CATSPER1
Function	Pore-forming subunit of the CatSper complex, a sperm-specific voltage-gated calcium channel that plays a central role in calcium- dependent physiological responses essential for successful fertilization, such as sperm hyperactivation, acrosome reaction and chemotaxis towards the oocyte.
Cellular Location	Cell projection, cilium, flagellum membrane; Multi-pass membrane protein {ECO:0000250 UniProtKB:Q91ZR5}. Note=Specifically located in the principal piece of the sperm tail.
Tissue Location	Testis-specific.

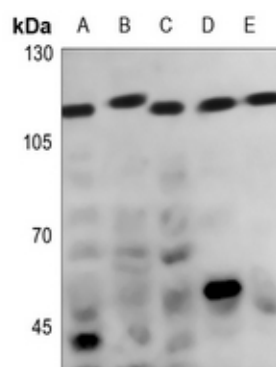
## Background

---

KLH-conjugated synthetic peptide encompassing a sequence within the center region of human CATSPER1. The exact sequence is proprietary.

## Images

---



Western blot analysis of CATSPER1 expression in Hela (A), DLD (B), A375 (C), mouse testis (D), rat testis (E) whole cell lysates.

Please note: All products are 'FOR RESEARCH USE ONLY. NOT FOR USE IN DIAGNOSTIC OR THERAPEUTIC PROCEDURES'.