

# Anti-CD269 Antibody

Rabbit polyclonal antibody to CD269

Catalog # AP60153

## Product Information

---

Application	WB
Primary Accession	<a href="#">Q02223</a>
Other Accession	<a href="#">Q88472</a>
Reactivity	Human, Mouse, Rat
Host	Rabbit
Clonality	Polyclonal
Calculated MW	20165

## Additional Information

---

Gene ID	608
Other Names	BCM; BCMA; Tumor necrosis factor receptor superfamily member 17; B-cell maturation protein; CD269
Target/Specificity	Recognizes endogenous levels of CD269 protein.
Dilution	WB~~WB (1/500 - 1/1000)
Format	Liquid in 0.42% Potassium phosphate, 0.87% Sodium chloride, pH 7.3, 30% glycerol, and 0.09% (W/V) sodium azide.
Storage	Store at -20 °C.Stable for 12 months from date of receipt

## Protein Information

---

Name	TNFRSF17
Synonyms	BCM, BCMA
Function	Receptor for TNFSF13B/BlyS/BAFF and TNFSF13/APRIL. Promotes B-cell survival and plays a role in the regulation of humoral immunity. Activates NF-kappa-B and JNK.
Cellular Location	Cell membrane; Single-pass type III membrane protein. Endomembrane system; Single-pass type III membrane protein Note=Perinuclear Golgi-like structures
Tissue Location	Expressed in mature B-cells, but not in T-cells or monocytes

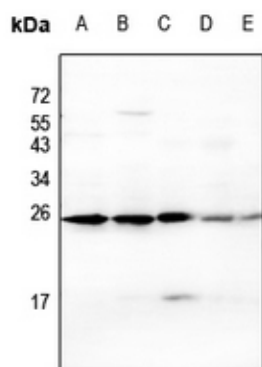
## Background

---

KLH-conjugated synthetic peptide encompassing a sequence within the center region of human CD269. The exact sequence is proprietary.

## Images

---



Western blot analysis of CD269 expression in HEK293T (A), U87MG (B), mouse spleen (C), PC12 (D), HepG2 (E) whole cell lysates.

Please note: All products are 'FOR RESEARCH USE ONLY. NOT FOR USE IN DIAGNOSTIC OR THERAPEUTIC PROCEDURES'.