

Anti-CD85j Antibody

Rabbit polyclonal antibody to CD85j

Catalog # AP60155

Product Information

Application	WB
Primary Accession	Q8NHL6
Reactivity	Human, Mouse, Rat
Host	Rabbit
Clonality	Polyclonal
Calculated MW	70819

Additional Information

Gene ID	10859
Other Names	ILT2; LIR1; MIR7; Leukocyte immunoglobulin-like receptor subfamily B member 1; LIR-1; Leukocyte immunoglobulin-like receptor 1; CD85 antigen-like family member J; Immunoglobulin-like transcript 2; ILT-2; Monocyte/macrophage immunoglobulin-like receptor 7; MIR-7; CD85j
Target/Specificity	KLH-conjugated synthetic peptide encompassing a sequence within the center region of human CD85j. The exact sequence is proprietary.
Dilution	WB~~WB (1/500 - 1/1000)
Format	Liquid in 0.42% Potassium phosphate, 0.87% Sodium chloride, pH 7.3, 30% glycerol, and 0.09% (W/V) sodium azide.
Storage	Store at -20 °C. Stable for 12 months from date of receipt

Protein Information

Name	LILRB1 {ECO:0000303 PubMed:20600445, ECO:0000312 HGNC:HGNC:6605}
Function	Receptor for class I MHC antigens. Recognizes a broad spectrum of HLA-A, HLA-B, HLA-C, HLA-G and HLA-F alleles (PubMed: 16455647 , PubMed: 28636952). Receptor for H301/UL18, a human cytomegalovirus class I MHC homolog. Ligand binding results in inhibitory signals and down-regulation of the immune response. Engagement of LILRB1 present on natural killer cells or T-cells by class I MHC molecules protects the target cells from lysis. Interaction with HLA-B or HLA-E leads to inhibition of FCER1A signaling and serotonin release. Inhibits FCGR1A-mediated phosphorylation of cellular proteins and mobilization of intracellular calcium ions (PubMed: 11907092 , PubMed: 9285411 , PubMed: 9842885). Recognizes HLA-G in complex with B2M/beta-2 microglobulin and a nonamer self-peptide (PubMed: 16455647). Upon interaction with peptide-bound HLA-G-B2M

complex, triggers secretion of growth-promoting factors by decidual NK cells (PubMed:[19304799](#), PubMed:[29262349](#)). Reprograms B cells toward an immune suppressive phenotype (PubMed:[24453251](#)).

Cellular Location

Cell membrane; Single-pass type I membrane protein

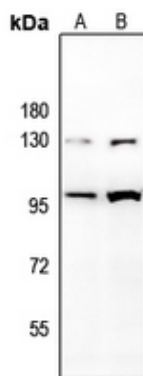
Tissue Location

Expressed in B cells, monocytes and various dendritic cell (DC) subsets including myeloid, plasmacytoid and tolerogenic DCs (at protein level) (PubMed:20448110, PubMed:24453251, PubMed:9285411, PubMed:9842885). Expressed in decidual macrophages (at protein level) (PubMed:19304799). Expressed in decidual NK cells (at protein level) (PubMed:29262349).

Background

KLH-conjugated synthetic peptide encompassing a sequence within the center region of human CD85j. The exact sequence is proprietary.

Images



Western blot analysis of CD85j expression in HuT78 (A), Myla2059 (B) whole cell lysates.

Please note: All products are 'FOR RESEARCH USE ONLY. NOT FOR USE IN DIAGNOSTIC OR THERAPEUTIC PROCEDURES'.