

Anti-Collagen 1 alpha 1 Antibody

Rabbit polyclonal antibody to Collagen 1 alpha 1

Catalog # AP60156

Product Information

Application	WB, IHC
Primary Accession	P02452
Other Accession	P11087
Reactivity	Human, Mouse, Rat, Rabbit, Bovine, Drosophila
Host	Rabbit
Clonality	Polyclonal
Calculated MW	138911

Additional Information

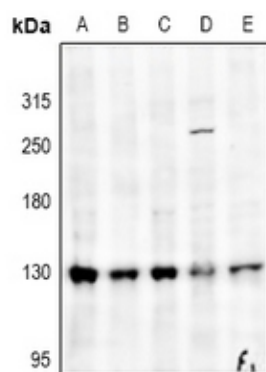
Gene ID	1277
Other Names	Collagen alpha-1(I) chain; Alpha-1 type I collagen
Target/Specificity	Recognizes endogenous levels of Collagen 1 alpha 1 protein.
Dilution	WB~~WB (1/500 - 1/1000), IHC (1/50 - 1/100) IHC~~WB (1/500 - 1/1000), IHC (1/50 - 1/100)
Format	Liquid in 0.42% Potassium phosphate, 0.87% Sodium chloride, pH 7.3, 30% glycerol, and 0.09% (W/V) sodium azide.
Storage	Store at -20 °C.Stable for 12 months from date of receipt

Protein Information

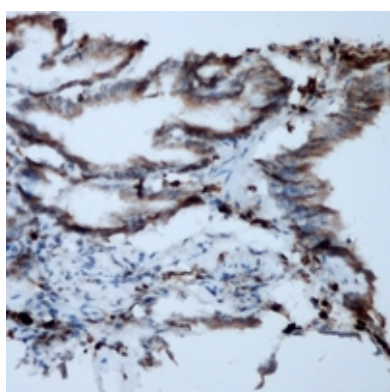
Name	COL1A1
Function	Type I collagen is a member of group I collagen (fibrillar forming collagen).
Cellular Location	Secreted, extracellular space, extracellular matrix {ECO:0000255 PROSITE-ProRule:PRU00793}
Tissue Location	Forms the fibrils of tendon, ligaments and bones. In bones the fibrils are mineralized with calcium hydroxyapatite

Background

KLH-conjugated synthetic peptide encompassing a sequence within the C-term region of human Collagen 1 alpha 1. The exact sequence is proprietary.



Western blot analysis of Collagen 1 alpha 1 expression in EC9706 (A), A375 (B), SGC7901 (C), Hela (D), HEK293T (E) whole cell lysates.



Immunohistochemical analysis of Collagen 1 alpha 1 staining in human lung formalin fixed paraffin embedded tissue section. The section was pre-treated using heat mediated antigen retrieval with sodium citrate buffer (pH 6.0). The section was then incubated with the antibody at room temperature and detected using an HRP conjugated compact polymer system. DAB was used as the chromogen. The section was then counterstained with haematoxylin and mounted with DPX.

Please note: All products are 'FOR RESEARCH USE ONLY. NOT FOR USE IN DIAGNOSTIC OR THERAPEUTIC PROCEDURES'.