

Anti-DNAJB2 Antibody

Rabbit polyclonal antibody to DNAJB2

Catalog # AP60158

Product Information

Application	WB
Primary Accession	P25686
Other Accession	Q9QYI5
Reactivity	Human, Mouse, Rat, Monkey
Host	Rabbit
Clonality	Polyclonal
Calculated MW	35580

Additional Information

Gene ID	3300
Other Names	HSJ1; HSPF3; DnaJ homolog subfamily B member 2; DnaJ protein homolog 1; Heat shock 40 kDa protein 3; Heat shock protein J1; HSJ-1
Target/Specificity	KLH-conjugated synthetic peptide encompassing a sequence within the C-term region of human DNAJB2. The exact sequence is proprietary.
Dilution	WB~~WB (1/500 - 1/1000)
Format	Liquid in 0.42% Potassium phosphate, 0.87% Sodium chloride, pH 7.3, 30% glycerol, and 0.09% (W/V) sodium azide.
Storage	Store at -20 °C.Stable for 12 months from date of receipt

Protein Information

Name	DNAJB2 (HGNC:5228)
Function	<p>Functions as a co-chaperone, regulating the substrate binding and activating the ATPase activity of chaperones of the HSP70/heat shock protein 70 family (PubMed:22219199, PubMed:7957263). In parallel, also contributes to the ubiquitin-dependent proteasomal degradation of misfolded proteins (PubMed:15936278, PubMed:21625540). Thereby, may regulate the aggregation and promote the functional recovery of misfolded proteins like HTT, MC4R, PRKN, RHO and SOD1 and be crucial for many biological processes (PubMed:12754272, PubMed:20889486, PubMed:21719532, PubMed:22396390, PubMed:24023695). Isoform 1 which is localized to the endoplasmic reticulum membranes may specifically function in ER-associated protein degradation of misfolded proteins (PubMed:15936278).</p> <p>[Isoform 2]: Cytoplasm. Nucleus</p>

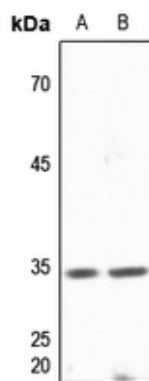
Cellular Location
Tissue Location

More abundantly expressed in neocortex, cerebellum, spinal cord and retina where it is expressed by neuronal cells (at protein level) (PubMed:12754272, PubMed:1599432). Detected at much lower level in non-neuronal tissues including kidney, lung, heart, skeletal muscle, spleen and testis (at protein level) (PubMed:12754272, PubMed:1599432). Isoform 1 is more abundant in neocortex and cerebellum compared to isoform 2 (at protein level) (PubMed:12754272)

Background

KLH-conjugated synthetic peptide encompassing a sequence within the C-term region of human DNAJB2. The exact sequence is proprietary.

Images



Western blot analysis of DNAJB2 expression in mouse brain (A), rat brain (B) whole cell lysates.

Please note: All products are 'FOR RESEARCH USE ONLY. NOT FOR USE IN DIAGNOSTIC OR THERAPEUTIC PROCEDURES'.