

# Anti-EB2 Antibody

Rabbit polyclonal antibody to EB2

Catalog # AP60160

## Product Information

---

Application	WB
Primary Accession	<a href="#">Q15555</a>
Other Accession	<a href="#">Q8R001</a>
Reactivity	Human, Mouse, Rat, Monkey, Chicken, Bovine
Host	Rabbit
Clonality	Polyclonal
Calculated MW	37031

## Additional Information

---

Gene ID	10982
Other Names	RP1; Microtubule-associated protein RP/EB family member 2; APC-binding protein EB2; End-binding protein 2; EB2
Target/Specificity	KLH-conjugated synthetic peptide encompassing a sequence within the center region of human EB2. The exact sequence is proprietary.
Dilution	WB~~WB (1/500 - 1/1000)
Format	Liquid in 0.42% Potassium phosphate, 0.87% Sodium chloride, pH 7.3, 30% glycerol, and 0.09% (W/V) sodium azide.
Storage	Store at -20 °C.Stable for 12 months from date of receipt

## Protein Information

---

Name	MAPRE2
Synonyms	RP1
Function	Adapter protein that is involved in microtubule polymerization, and spindle function by stabilizing microtubules and anchoring them at centrosomes. Therefore, ensures mitotic progression and genome stability (PubMed: <a href="#">27030108</a> ). Acts as a central regulator of microtubule reorganization in apico-basal epithelial differentiation (By similarity). Plays a role during oocyte meiosis by regulating microtubule dynamics (By similarity). Participates in neurite growth by interacting with plexin B3/PLXNB3 and microtubule reorganization during apico-basal epithelial differentiation (PubMed: <a href="#">22373814</a> ). Also plays an essential role for cell migration and focal adhesion dynamics. Mechanistically, recruits HAX1 to microtubules in order to regulate focal adhesion dynamics (PubMed: <a href="#">26527684</a> ).

<b>Cellular Location</b>	Cytoplasm, cytoskeleton. Note=Associated with the microtubule network. Accumulates at the plus end of microtubules
<b>Tissue Location</b>	Expressed in different tumor cell lines. Up- regulated in activated B- and T-lymphocytes

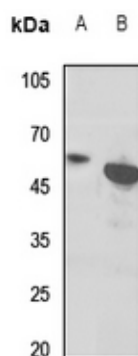
## Background

---

KLH-conjugated synthetic peptide encompassing a sequence within the center region of human EB2. The exact sequence is proprietary.

## Images

---



Western blot analysis of EB2 expression in mouse heart (A), rat heart (B) whole cell lysates.

Please note: All products are 'FOR RESEARCH USE ONLY. NOT FOR USE IN DIAGNOSTIC OR THERAPEUTIC PROCEDURES'.