

Anti-Endoglycan Antibody

Rabbit polyclonal antibody to Endoglycan
Catalog # AP60162

Product Information

Application	WB
Primary Accession	Q9NZ53
Other Accession	Q8CAE9
Reactivity	Human, Mouse, Rat, Monkey
Host	Rabbit
Clonality	Polyclonal
Calculated MW	65076

Additional Information

Gene ID	50512
Other Names	Podocalyxin-like protein 2; Endoglycan
Target/Specificity	KLH-conjugated synthetic peptide encompassing a sequence within the center region of human Endoglycan. The exact sequence is proprietary.
Dilution	WB~~WB (1/500 - 1/1000)
Format	Liquid in 0.42% Potassium phosphate, 0.87% Sodium chloride, pH 7.3, 30% glycerol, and 0.09% (W/V) sodium azide.
Storage	Store at -20 °C.Stable for 12 months from date of receipt

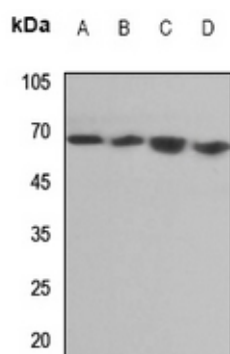
Protein Information

Name	PODXL2
Function	Acts as a ligand for vascular selectins. Mediates rapid rolling of leukocytes over vascular surfaces through high affinity divalent cation-dependent interactions with E-, P- and L-selectins.
Cellular Location	Membrane; Single-pass type I membrane protein
Tissue Location	Expressed in T-cells, B-cells and monocytes. Expression is higher on memory and germinal center cells than on naive B-cells (at protein level). Highly expressed in brain. Moderately expressed in pancreas, kidney and lymphoid node. Weakly expressed in liver. Detected in both endothelial cells and CD34+ bone marrow cells

Background

KLH-conjugated synthetic peptide encompassing a sequence within the center region of human Endoglycan. The exact sequence is proprietary.

Images



Western blot analysis of Endoglycan expression in HGC27 (A), mouse lung (B), mouse kidney (C), rat lung (D) whole cell lysates.

Please note: All products are 'FOR RESEARCH USE ONLY. NOT FOR USE IN DIAGNOSTIC OR THERAPEUTIC PROCEDURES'.