

Anti-ENT2 Antibody

Rabbit polyclonal antibody to ENT2

Catalog # AP60163

Product Information

Application	WB
Primary Accession	Q14542
Other Accession	Q61672
Reactivity	Human, Mouse, Rat, Bovine
Host	Rabbit
Clonality	Polyclonal
Calculated MW	50113

Additional Information

Gene ID	3177
Other Names	DER12; ENT2; HNP36; Equilibrative nucleoside transporter 2; 36 kDa nucleolar protein HNP36; Delayed-early response protein 12; Equilibrative nitrobenzylmercaptapurine riboside-insensitive nucleoside transporter; Equilibrative NBMPR-insensitive nucleoside transporter; Hydrophobic nucleolar protein, 36 kDa; Nucleoside transporter, ei-type; Solute carrier family 29 member 2
Target/Specificity	KLH-conjugated synthetic peptide encompassing a sequence within the center region of human ENT2. The exact sequence is proprietary.
Dilution	WB~~WB (1/500 - 1/1000)
Format	Liquid in 0.42% Potassium phosphate, 0.87% Sodium chloride, pH 7.3, 30% glycerol, and 0.09% (W/V) sodium azide.
Storage	Store at -20 °C.Stable for 12 months from date of receipt

Protein Information

Name	SLC29A2 (HGNC:11004)
Synonyms	DER12, ENT2, HNP36
Function	Bidirectional uniporter involved in the facilitative transport of nucleosides and nucleobases, and contributes to maintaining their cellular homeostasis (PubMed: 10722669 , PubMed: 12527552 , PubMed: 12590919 , PubMed: 16214850 , PubMed: 21795683 , PubMed: 9396714 , PubMed: 9478986). Functions as a Na(+)-independent, passive transporter (PubMed: 9478986). Involved in the transport of nucleosides such as inosine, adenosine, uridine, thymidine, cytidine and guanosine (PubMed: 10722669 , PubMed: 12527552 ,

PubMed:[12590919](#), PubMed:[16214850](#), PubMed:[21795683](#), PubMed:[9396714](#), PubMed:[9478986](#)). Also able to transport purine nucleobases (hypoxanthine, adenine, guanine) and pyrimidine nucleobases (thymine, uracil) (PubMed:[16214850](#), PubMed:[21795683](#)). Involved in nucleoside transport at basolateral membrane of kidney cells, allowing liver absorption of nucleoside metabolites (PubMed:[12527552](#)). Mediates apical nucleoside uptake into Sertoli cells, thereby regulating the transport of nucleosides in testis across the blood-testis-barrier (PubMed:[23639800](#)). Mediates both the influx and efflux of hypoxanthine in skeletal muscle microvascular endothelial cells to control the amount of intracellular hypoxanthine available for xanthine oxidase-mediated ROS production (By similarity).

Cellular Location

Apical cell membrane; Multi-pass membrane protein. Basolateral cell membrane; Multi-pass membrane protein. Note=Localized to the apical membrane of Sertoli cells.

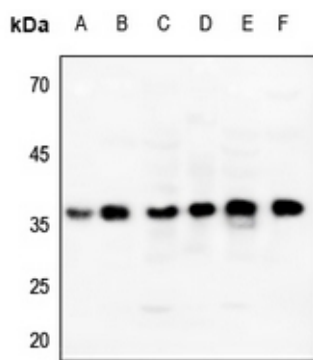
Tissue Location

Highly expressed in skeletal muscle (PubMed:[9478986](#)). Expressed in liver, lung, placenta, brain, heart, kidney and ovarian tissues (PubMed:[9478986](#)). Expressed in testis at the blood-brain-barrier (PubMed:[23639800](#)).

Background

KLH-conjugated synthetic peptide encompassing a sequence within the center region of human ENT2. The exact sequence is proprietary.

Images



Western blot analysis of ENT2 expression in Hela (A), mouse muscle (B), mouse lung (C), mouse brain (D), rat liver (E), rat heart (F) whole cell lysates.

Please note: All products are 'FOR RESEARCH USE ONLY. NOT FOR USE IN DIAGNOSTIC OR THERAPEUTIC PROCEDURES'.