

Anti-FGF17 Antibody

Rabbit polyclonal antibody to FGF17

Catalog # AP60168

Product Information

Application	WB
Primary Accession	O60258
Other Accession	P63075
Reactivity	Human, Mouse, Rat, Monkey, Pig, Bovine, Dog, SARS
Host	Rabbit
Clonality	Polyclonal
Calculated MW	24891

Additional Information

Gene ID	8822
Other Names	Fibroblast growth factor 17; FGF-17
Target/Specificity	KLH-conjugated synthetic peptide encompassing a sequence within the C-term region of human FGF17. The exact sequence is proprietary.
Dilution	WB~~WB (1/500 - 1/1000)
Format	Liquid in 0.42% Potassium phosphate, 0.87% Sodium chloride, pH 7.3, 30% glycerol, and 0.09% (W/V) sodium azide.
Storage	Store at -20 °C.Stable for 12 months from date of receipt

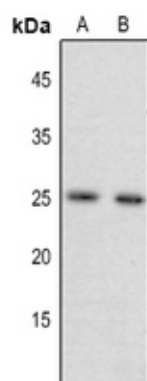
Protein Information

Name	FGF17
Function	Plays an important role in the regulation of embryonic development and as signaling molecule in the induction and patterning of the embryonic brain. Required for normal brain development.
Cellular Location	Secreted.
Tissue Location	Preferentially expressed in the embryonic brain.

Background

KLH-conjugated synthetic peptide encompassing a sequence within the C-term region of human FGF17. The exact sequence is proprietary.

Images



Western blot analysis of FGF17 expression in mouse liver (A), rat liver (B) whole cell lysates.

Please note: All products are 'FOR RESEARCH USE ONLY. NOT FOR USE IN DIAGNOSTIC OR THERAPEUTIC PROCEDURES'.