

Anti-FILTRIN Antibody

Rabbit polyclonal antibody to FILTRIN

Catalog # AP60169

Product Information

| | |
|-------------------|------------------------|
| Application | WB |
| Primary Accession | Q6UWL6 |
| Other Accession | Q7TSU7 |
| Reactivity | Human, Mouse, Rat |
| Host | Rabbit |
| Clonality | Polyclonal |
| Calculated MW | 75093 |

Additional Information

| | |
|--------------------|--|
| Gene ID | 84063 |
| Other Names | NEPH3; Kin of IRRE-like protein 2; Kin of irregular chiasm-like protein 2; Nephtrin-like protein 3 |
| Target/Specificity | KLH-conjugated synthetic peptide encompassing a sequence within the N-term region of human FILTRIN. The exact sequence is proprietary. |
| Dilution | WB~~WB (1/500 - 1/1000) |
| Format | Liquid in 0.42% Potassium phosphate, 0.87% Sodium chloride, pH 7.3, 30% glycerol, and 0.09% (W/V) sodium azide. |
| Storage | Store at -20 °C.Stable for 12 months from date of receipt |

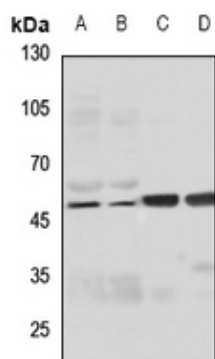
Protein Information

| | |
|-------------------|---|
| Name | KIRREL2 |
| Synonyms | NEPH3 |
| Function | May regulate basal insulin secretion. |
| Cellular Location | Cell membrane {ECO:0000250 UniProtKB:Q7TSU7}; Single-pass type I membrane protein. Note=Localized along the sites of the cell contacts. Colocalizes with E-Cadherin and beta- catenin. {ECO:0000250 UniProtKB:Q7TSU7} |
| Tissue Location | Highly expressed in beta-cells of the pancreatic islets. |

Background

KLH-conjugated synthetic peptide encompassing a sequence within the N-term region of human FILTRIN. The exact sequence is proprietary.

Images



Western blot analysis of FILTRIN expression in HEK293T (A), Hela (B), mouse brain (C), rat brain (D) whole cell lysates.

Please note: All products are 'FOR RESEARCH USE ONLY. NOT FOR USE IN DIAGNOSTIC OR THERAPEUTIC PROCEDURES'.