

Anti-GALR1 Antibody

Rabbit polyclonal antibody to GALR1

Catalog # AP60172

Product Information

Application	WB
Primary Accession	P47211
Other Accession	P56479
Reactivity	Human, Mouse, Rat
Host	Rabbit
Clonality	Polyclonal
Calculated MW	38953

Additional Information

Gene ID	2587
Other Names	GALNR; GALNR1; Galanin receptor type 1; GAL1-R; GALR-1
Target/Specificity	KLH-conjugated synthetic peptide encompassing a sequence within the center region of human GALR1. The exact sequence is proprietary.
Dilution	WB~~WB (1/500 - 1/1000)
Format	Liquid in 0.42% Potassium phosphate, 0.87% Sodium chloride, pH 7.3, 30% glycerol, and 0.09% (W/V) sodium azide.
Storage	Store at -20 °C.Stable for 12 months from date of receipt

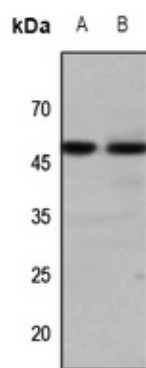
Protein Information

Name	GALR1
Synonyms	GALNR, GALNR1
Function	Receptor for the hormone galanin. The activity of this receptor is mediated by G proteins that inhibit adenylate cyclase activity.
Cellular Location	Cell membrane; Multi-pass membrane protein

Background

KLH-conjugated synthetic peptide encompassing a sequence within the center region of human GALR1. The exact sequence is proprietary.

Images



Western blot analysis of GALR1 expression in Hela (A), mouse brain (B) whole cell lysates.

Please note: All products are 'FOR RESEARCH USE ONLY. NOT FOR USE IN DIAGNOSTIC OR THERAPEUTIC PROCEDURES'.