

Anti-GPR152 Antibody

Rabbit polyclonal antibody to GPR152

Catalog # AP60177

Product Information

Application	WB
Primary Accession	Q8TDT2
Other Accession	Q8BXS7
Reactivity	Human, Mouse
Host	Rabbit
Clonality	Polyclonal
Calculated MW	50962

Additional Information

Gene ID	390212
Other Names	PGR5; Probable G-protein coupled receptor 152; G-protein coupled receptor PGR5
Target/Specificity	Recognizes endogenous levels of GPR152 protein.
Dilution	WB~~WB (1/500 - 1/1000)
Format	Liquid in 0.42% Potassium phosphate, 0.87% Sodium chloride, pH 7.3, 30% glycerol, and 0.09% (W/V) sodium azide.
Storage	Store at -20 °C.Stable for 12 months from date of receipt

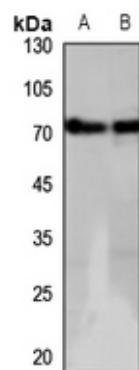
Protein Information

Name	GPR152
Synonyms	PGR5
Function	Orphan receptor.
Cellular Location	Cell membrane; Multi-pass membrane protein.

Background

KLH-conjugated synthetic peptide encompassing a sequence within the center region of human GPR152. The exact sequence is proprietary.

Images



Western blot analysis of GPR152 expression in HEK293T (A), mouse brain (B) whole cell lysates.

Please note: All products are 'FOR RESEARCH USE ONLY. NOT FOR USE IN DIAGNOSTIC OR THERAPEUTIC PROCEDURES'.